

# Combi

## Combi Child Car Seat WEGO

### User Guide

- For the safety of the child, please read this user guide carefully before use and use the child car seat properly.
- Keep this user guide using hooks on the rear of the base for future reference.
- Please keep this user guide until the product will be scrapped or disposed. When this product is given to other user, this user guide must be attached.

This product is certified according to the UN R44/04 standard.

- Universal: G 0, 1
- Applicable weight: below 18 kg



**DANGER** Use only backward facing mode (do not use forward facing mode) for an infant weighing less than 9 kg.

**CAUTION** To avoid causing stress to the child, avoid continuous long-time usage and give the child a break from the child car seat about once every hour. Be particularly attentive to changes in the physical condition of infants with undeveloped neck muscles.

## 1. Before use

Thank you for purchasing this Combi child car seat. For the safety of the child, please read this user guide carefully before use and use the child car seat properly.

### About labels

The caution items mentioned in this user guide are for your reference in order to use this product safely. [Danger], [Warning] and [Caution] indicate the potential consequences if the mentioned are not followed properly and are categorized according to the level of severity.

The child car seat is designed to reduce injury to the child in case of traffic accident, etc. However, there is no guarantee that the child car seat can completely protect the child from injury. A child using the child car seat must be accompanied by an adult.

Labels	Contents of the labels
<b>DANGER</b>	Improper operation will directly result to death or severe injury.
<b>WARNING</b>	Improper operation may cause death or severe injury.
<b>CAUTION</b>	Improper operation may cause injury or damage to the product.
<b>HINT</b>	It is the recommendations about usage of child car seat and useful hints.

## 4. Use conditions

This section describes how to determine the installation direction and use the inner cushion and shoulder belt cover according to the child's weight. Use the child car seat properly according to the child's weight.

Child weight under 7 kg	Child weight between 7 and 10 kg	Child weight between 9 and 18 kg
<ul style="list-style-type: none"><li>Backward facing relative to driving direction.</li><li>Shoulder belt cover for baby should be used.</li><li>Shoulder belt cover for child must not be used.</li></ul>	<ul style="list-style-type: none"><li>Backward facing relative to driving direction.</li><li>Shoulder belt cover for baby should be used.</li><li>Shoulder belt cover for child must not be used.</li></ul>	<ul style="list-style-type: none"><li>Forward facing relative to driving direction.</li><li>Shoulder belt cover for child should be used.</li><li>Shoulder belt cover for baby must not be used.</li></ul>
<ul style="list-style-type: none"><li>Inner cushion for head and seat must be used.</li></ul>	<ul style="list-style-type: none"><li>Do not use inner cushion.</li></ul>	<ul style="list-style-type: none"><li>Do not use inner cushion.</li></ul>
<b>Use guidelines</b> Height: up to about 60 cm Age: newborn to around 4 months old * Newborn refers to newly born infants weighing 2.5 kg or more and who were carried for 37 weeks or more in pregnancy.	<b>Use guidelines</b> Height: about 60 cm to 75 cm Age: around 4 months old to 1 year old.	<b>Use guidelines</b> Height: about 75 cm to 105 cm * The back of the child's head should not extend above the main body backrest. Age: around 1 to 4 years old.

**DANGER** Always use backward facing mode for children weighing under 9 kg. Do not use forward facing mode in this case, as this is extremely dangerous to the child.  
The height and age guidelines noted above are for reference only. Even if the height and age conditions are met, the weight condition should be used to determine the appropriate usage mode.

## 2. Type of seat belts and precautions of use

Installation method varies according to different types of seat belt. Some cars are unable to install our product.

Only suitable for use in the listed vehicles fitted with 3 point safety-belt, approved to ECE Regulation No.16 or other equivalent standards.

Seat belt types and characteristics (how to distinguish)	Caution of backward facing mode	Caution of forward facing mode
ELR Can be extended and wound back when pulled slowly, but locks when pulled suddenly.	Slowly pull out the seat belt and use it to secure the child car seat.	Slowly pull out the seat belt and use it to secure the child car seat.
AELR After the seat belt is pulled out completely, the seat belt lock function operates while winding back and the seat belt cannot be pulled out again. (The seat belt unlocks after it is completely wound back.)	It is dangerous to completely pull out the seat belt. Wind back the seat belt to release the child car seat lock function, and then install the child car seat.	Completely pull out the seat belt, wind it back to secure the child car seat, and then fix the seat belt with the locking device of the child car seat.
Other Seat belts other than the above.	Installation is not possible.	Installation is not possible.

\* If there are questions about type of seat belt, please contact the vehicle manufacturer.

## 5. Inapplicable vehicle seats

Do not install the child car seat to a vehicle seat that meets any of the following conditions.

Do not use the child car seat if it cannot be secured firmly to the vehicle seat, even if none of the below conditions apply.

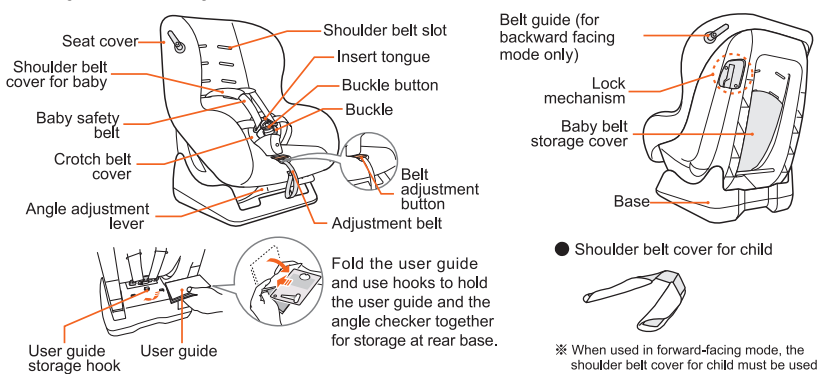
- Vehicle seat without a seat belt.
- Vehicle seat with a 2-point seat belt.
- Vehicle seat with a seating depth of less than 43 cm.
- Deep bucket seat.
- Vehicle seat facing backwards or sideways against the driving direction.
- Vehicle seat with an extra large headrest.
- Vehicle seat with a removable headrest if child car seat operations can be performed after the vehicle headrest is removed.
- Vehicle seat with a passive seat belt.
- What is a passive seat belt? ... A seat belt that automatically fastens itself when the passenger sits in the vehicle seat and closes the door, (also called an automatic seat belt).
- Vehicle seat equipped with an airbag.
- Installation is possible to a vehicle seat equipped with only a side airbag.
- Vehicle seat with the seat belt extending from the center of the seat part.
- Vehicle seat with a seat belt extending from a position in front of the seat belt guide hole of the child car seat.
- Vehicle seat with an extremely uneven surface that prevents stable installation.
- Vehicle seat with a usable seat belt installation width\* of less than 36 cm.
- The width between the point where the seat belt contacts the edge of the vehicle seat and the base of the seat belt buckle.
- Vehicle seat with an extremely short seat belt.

## 3. Name of components

Check that all parts are available before use.

### Package contents

- Main body
- Inner cushion
- EggShock pad
- User guide
- Angle checker
- Shoulder belt cover for child



## 6. For safe use of the child car seat

### Danger

The following misuses may cause malfunction to the child car seat and lead to danger.

- Do not seat a child who does not satisfy the applicable conditions, or install the child car seat onto a vehicle seat which is inapplicable.
- Always follow the user guide to install the child car seat with seat belt. Please do not install with improper components.
- Never use the child car seat which can not be fixed as stated in the user guide. Please install the child car seat to the other vehicle seats.
- Do not allow the child to stand, crouch or kneel on the child car seat. Make sure the child is seated properly, the crotch belt cover and baby belt are fastened correctly, the left and right insert tongues are inserted firmly into the buckle.
- Do not install the child car seat onto the vehicle seat equipped with an air bag. In case of collision, the exploded air bag with expose the child to major impact which is extremely dangerous. Vehicle seat with only side air bag is acceptable.

### In case of emergency

- Always fix the child car seat with the seat belt when installing to the vehicle. Never use with a rope, string or other than seat belt to fix it.
- In case of emergency, such as accidents, press the button to release the baby belt from the buckle, and remove the child from the vehicle seat immediately.

## 7. Daily inspection

To ensure proper function of the child car seat, check the following items before use.

- Check that the baby belt fits snugly against the child's body. (Pull the adjustment belt to adjust the fit.)
- Check that the correct baby shoulder belt slots are used and the baby belt is positioned properly.
- Check that the seat belt is not loose or twisted.
- Check that the seat belt insert tongue is inserted firmly into the seat belt buckle.
- Check that the baby belt is not twisted or loose. Always pull down the baby waist belt to firmly hold the pelvis position.
- Check that the child car seat is securely fastened to the vehicle seat. (Hold the sides of the main body base and try to rock it back and forth to make sure that it is secure.)
- The illustration shows an example of use for forward-facing mode.

## 8. Maintenance, storage and disposal

**Washing the seat cover, EggShock pad and other sewn parts**  
Be sure to follow the washing instructions and cautions below.

- Wash the seat cover following the care label sewn with the seat cover.
- Hand-wash with water or little warm water.
- Do not use bleach.
- The neutral detergent is recommended for washing. Do not use the detergent containing fluorescent agent or bleaching agent. Otherwise, rough skin or eczema etc. may be caused.
- Do not iron.
- Do not dry clean.
- After washing by hand, wring out lightly.
- Screw water out softly, and then return to original shape and let dry in the shade.
- Do not use washing machine, dehydrator and drying machine.
- The color may fade out because of characteristics of the product.

### Maintenance of the main body and baby belt

Normally wipe clean with a well-wrung wet (water) cloth. When extremely dirty, remove the dirt using a solution of neutral detergent diluted with water, then wipe with a wet (water) cloth and dry in the shade.

### Urethane materials

The dyestuff used in the seat cover and other sewn parts may transfer to the urethane materials on the back of these parts. However, this is not a problem for quality or safety.

### WARNING

Do not use undiluted neutral detergent, gasoline, benzene or other organic solvents when cleaning. These may damage the main body and baby belt, which is dangerous to the child.

### Storage

#### Main body

When the child car seat will not be used for a long period of time, uninstall it and store in a well-ventilated place out of direct sunlight and away from children. Allow the main body to dry thoroughly before storing it.

#### User guide

Be sure to read and understand this user guide before use. Always keep this user guide using hook on the rear of the base for storage.

### Disposal

- When disposing of the child car seat, follow the standards of your municipality or region.
- The child car seat may suffer structural damage in the event of collision or even if it is dropped one time or falls from a high level. In this case, immediately stop using the child car seat even if no damage is visible. When disposing of the child car seat after an accident, remove the seat cover and other parts before disposal to prevent the child car seat from being reused.

## 9. Using the inner cushion and EggShock pad

The inner cushion is designed to offer extra protection to small infants. Use the inner cushion for a child weighing under 7 kg. (The child car seat is shipped from the factory with the inner cushion (head part) attachment strings tied through the 2nd highest shoulder belt slots.)

### DANGER

Misuse of the inner cushion may prevent proper function and endanger the child. Read the instructions for use carefully and use the inner cushion properly.

### WARNING

- The inner cushion (both head part and seat part) must be used for a child weighing under 7 kg.
- Remove the inner cushion when baby weighs over 7 kg.
- Do not use the inner cushion in forward facing mode regardless of the child's weight.

### CAUTION

- Do not leave the removed inner cushion inside the vehicle. Sudden braking may cause the inner cushion to move inside the vehicle and interfere with driving.
- Do not carry the child car seat by the inner cushion.

### Attaching and removing the inner cushion

- Untie the inner cushion (head part) attachment strings that are tied on the back of the main body. Remove the inner cushion for head from the front side.
- Press the buckle button and remove the insert tongue from the buckle, remove the inner cushion for seat.
- Reverse the procedure to attach the inner cushion.

### Using the EggShock pad

The EggShock pad can be removed from inner cushion for head and attached to the seat cover for head. (The child car seat is shipped from the factory with the EggShock pad inserted to the inner cushion for head.)

## 10. Removing and attaching the seat cover

### Removing the seat cover

- Remove the baby belt storage cover from backside of main body.
- Unhook the left and right baby belts from the belt adjustment metal.
- Pull out the baby belts from the shoulder belt covers.
- Unhook the crotch pad.
- Remove the seat cover from the belt guides on the upper right and left side of the main body.
- Release the hooks sewn on both sides of the seat cover from the main body.
- Unhook the crotch pad.
- Belt adjustment metal.
- Baby belt storage cover.
- Baby belt.
- Shoulder belt cover.
- Belt guide (left & right).
- Hook (left & right).
- Crotch pad.

- Reverse the procedure to attach the seat cover.

## 11. Preparation for installation

### DANGER

- An unsecured child car seat will not function properly, which is extremely dangerous to the child. In this case install it to a different vehicle seat.
- Do not use a rope, cord or anything other than the seat belt to secure the child car seat when installing it to the vehicle.
- Do not install the child car seat to a vehicle seat equipped with an airbag. In case of collision, the deploying airbag will strongly impact the child car seat, which is dangerous to the child.
- Installation is possible to a vehicle seat equipped with only a side airbag.

### WARNING

- Do not install to a vehicle seat with a seat belt that is damaged in any way.
- Always secure the child car seat with the seat belt even when the child is not seated.
- If backward facing installation to the front passenger seat without an airbag obstructs the driver's view to the side mirror, install the child car seat to a rear vehicle seat.
- Do not install the child car seat to the front passenger seat if installation interferes with proper and safe use of the gearshift and handbrake or other driving operations.
- Do not install the child car seat to the front passenger seat of a 2-door or 3-door vehicle when passengers will ride in the rear seat. This may obstruct exit from the vehicle in an emergency.

### Before installation

- Park the vehicle in a flat location where the doors can be fully opened.

- Slide the front seat forward and tilt the front to create space for easier installation to the vehicle.

### Vehicle seats with a sliding function

If the vehicle seat for installation has a sliding function, slide the vehicle seat forward after installation to secure the child car seat even more firmly.

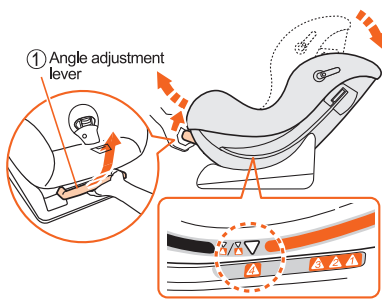
### Vehicle headrest

Check the shape of the vehicle seat and the vehicle headrest, and remove the vehicle headrest if possible.



## 12. Installation for backward facing mode (for a child weighing under 10 kg)

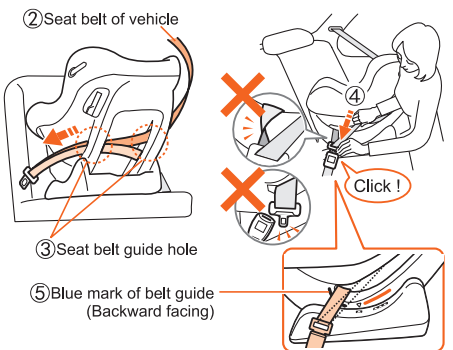
- 1 ① Pull the angle adjustment lever and set  $\nabla$  mark to "4".



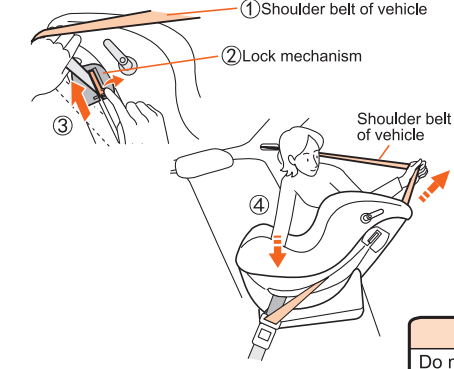
### CAUTION

- When you adjust the angle, check there is no foreign object such as dirt and foods in the gap of angle adjustment lock mechanism on the rear side of main body. Otherwise, it cannot be locked securely. If an operation failure is generated when you adjust the angle, please contact our local distributor.
- Do not put your finger or other body part in the gap of angle adjustment lock mechanism on inside of main body.

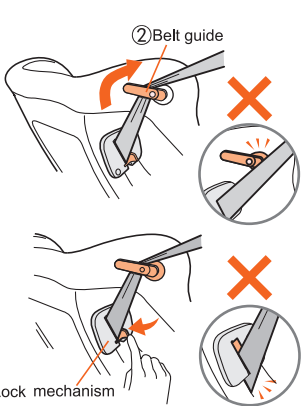
- 2 ① Position the main body so that it faces backwards against the driving direction.  
② Slowly pull out the seat belt making sure that it is not twisted.  
③ Route the seat belt of vehicle through the seat belt guide hole.  
④ Pull out the seat belt from the guide hole on the opposite side of the child car seat, and insert the insert tongue into the seat belt buckle until it locks with a "click" sound.  
⑤ Make sure the waist belt is routing through the blue mark of belt guide (backward facing).



- 3 ① Pull the shoulder belt of vehicle from door side of vehicle.  
② Open the lock mechanism on door side of vehicle.  
③ Tuck the shoulder belt of vehicle to the gap created by the lock mechanism.  
④ While pushing the main body against the seat of vehicle securely, pull out the shoulder belt of vehicle strongly to tighten the waist belt of vehicle.



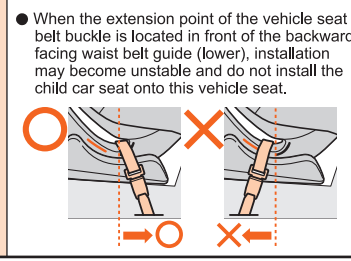
- 4 ① With the shoulder belt of vehicle strongly pulled.  
② Tuck it in the belt guide.  
③ Lock the lock mechanism.



### WARNING

Do not use any load bearing contact points other than those described in the user guide.

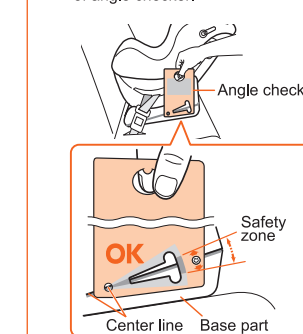
- The child car seat may become unstable if the seat belt buckle contacts main body and causes looseness in the buckle belt. Do not use the child car seat in such circumstances.



Please contact local distributor for any inquiries.

- HINT ① Angle checker is used to verify installation angle in backward facing mode.

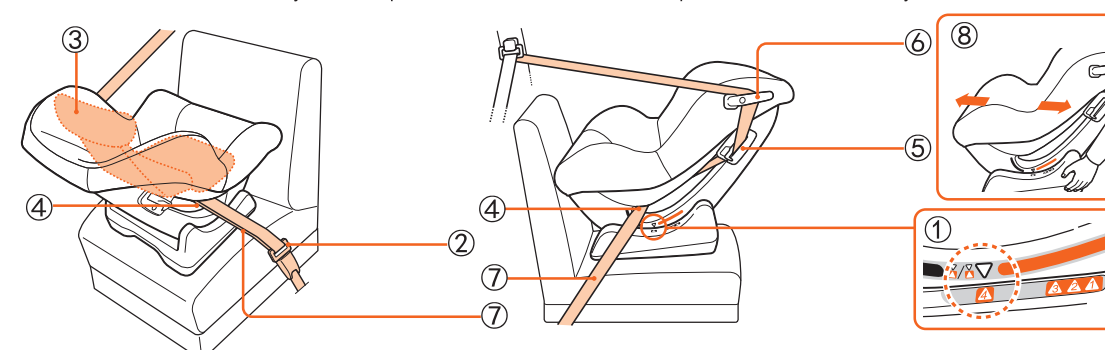
- ① Hold the angle checker by the hole in the upper part.  
② Apply the angle checker to the center line on side surface of base as shown in the figure.  
③ Check the center line is within the safety zone of hole in the lower part of angle checker.



### Check-list after backward facing mode installation

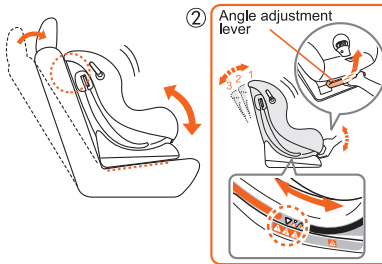
#### Check the followings after the installation.

- ① The angle adjustment position is surely set to "4".
- ② Tongue of seat belt of vehicle should be securely inserted in the buckle of vehicle and should not be disconnected.
- ③ If the weight of your baby is less than 7kg, the inner cushion should be attached.
- ④ The waist belt of vehicle should pass through the belt guide (lower) for backward facing mode on right and left sides.
- ⑤ The shoulder belt of vehicle should pass through the lock mechanism on door side of vehicle.
- ⑥ The shoulder belt of vehicle should pass through the belt guide (upper) for backward facing mode on door side of vehicle.
- ⑦ There should not be warpage, looseness or torsion on the seat belt of vehicle.
- ⑧ Hold the side surface of main body base and push it back and forth to check the product is mounted securely.



## 13. Installation for forward facing mode (for a child weighing between 9 kg and 18 kg)

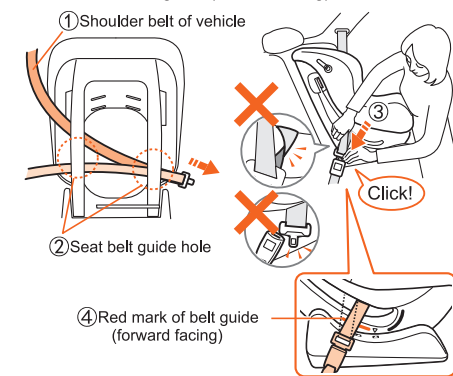
- 1 ① Position the main body so that it faces forwards toward the driving direction.  
② Adjust the angle of main body according to the angle of back seat of vehicle.  
Pull the angle adjustment lever and set  $\nabla$  mark to "1-3".



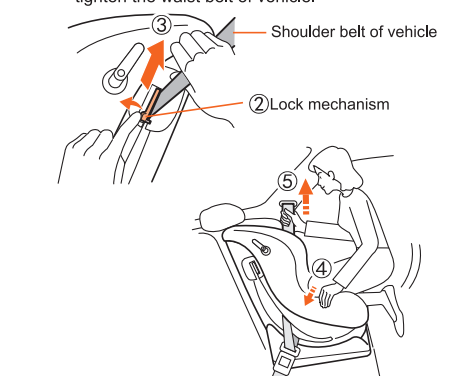
### CAUTION

- When you adjust the angle, check there is no foreign object such as dirt and foods in the gap of angle adjustment lock mechanism on the rear side of main body. Otherwise, it cannot be locked securely. If an operation failure is generated when you adjust the angle, please contact our local distributor.
- Do not put your finger or other body part in the gap of angle adjustment lock mechanism on inside of main body.

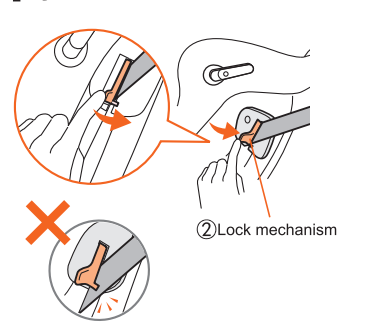
- 2 ① Slowly pull out the seat belt and make sure that it is not twisted.  
② Route the seat belt of vehicle through the seat belt guide hole.  
③ Pull out the seat belt from the guide hole on the opposite side of the child car seat, and insert the insert tongue into the seat belt buckle until it locks with a "click" sound.  
④ Make sure the waist belt is routing through the red mark of belt guide (forward facing).



- 3 ① Pull the shoulder belt of vehicle from door side of vehicle.  
② Open the lock mechanism on door side of vehicle.  
③ Tuck the shoulder belt of vehicle to the gap created by the lock mechanism.  
④ Kneel down on the back part of seat of main body and lean your body weight into the main body to secure it onto the vehicle seat.  
⑤ Pull out the shoulder belt of vehicle strongly to tighten the waist belt of vehicle.



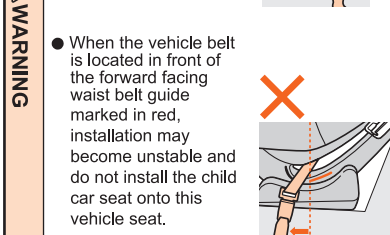
- 4 ① Pull out the shoulder belt of vehicle strongly.  
② Lock the lock mechanism.



### WARNING

After install the child car seat, please do not change angle. Otherwise, it will cause loose to the vehicle seat belt. Do not use any load bearing contact points other than those described in the user guide.

- The child car seat may become unstable if the seat belt buckle contacts main body and causes looseness in the buckle belt. Do not use the child car seat in such circumstances.

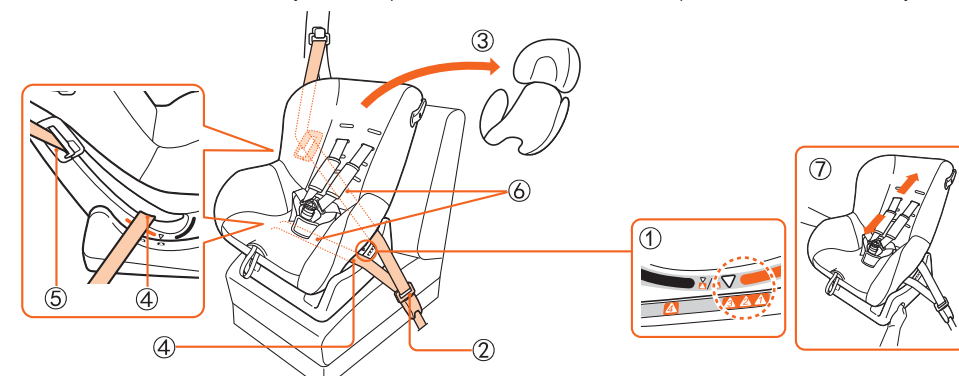


Please contact local distributor for any inquiries.

### Check-list after forward facing mode installation

#### Check the followings after the installation.

- ① The angle adjustment position is surely set to "1-3".
- ② Tongue of seat belt of vehicle should be securely inserted in the buckle of vehicle and should not be disconnected.
- ③ When using forward facing, the inner cushion must be removed.
- ④ The waist belt of vehicle should pass through the belt guide (lower) for forward facing mode on right and left sides.
- ⑤ The shoulder belt of vehicle should pass through the lock mechanism on door side of vehicle.
- ⑥ There should not be warpage, looseness or torsion on the seat belt of vehicle.
- ⑦ Hold the side surface of main body base and push it back and forth to check the product is mounted securely.



## 14. Adjusting the baby shoulder belt position to suit the child

The baby shoulder belt slot position to be selected differs in forward facing mode and backward facing mode. Refer to the guide below and adjust the baby shoulder belt position before using the child car seat.  
※ The baby crotch belt cannot be adjusted. (When this child car seat is shipped out from factory, these shoulder belts are set to be from the lowest slot.)

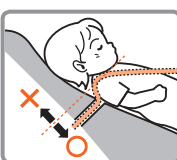
### WARNING

- Select the proper baby shoulder belt slot position according to the installation direction.
- Use left and right baby shoulder belt slots that are the same height.

### Baby shoulder belt slot position

#### ● Backward mode

Use the baby shoulder belt slots that are slightly below (about 3 cm) the child's shoulder height.

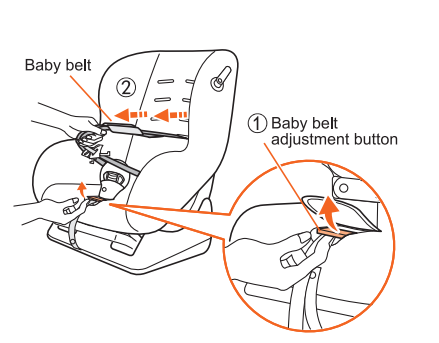


#### ● Forward mode

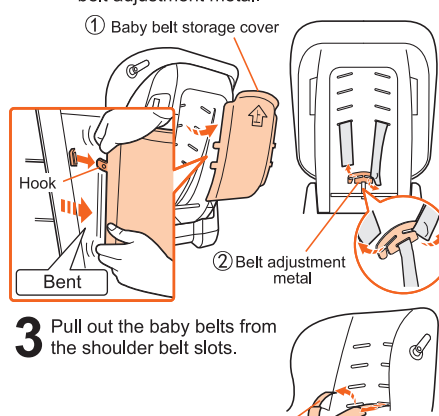
Use the baby shoulder belt slots that are slightly above (about 3 cm) the child's shoulder height.



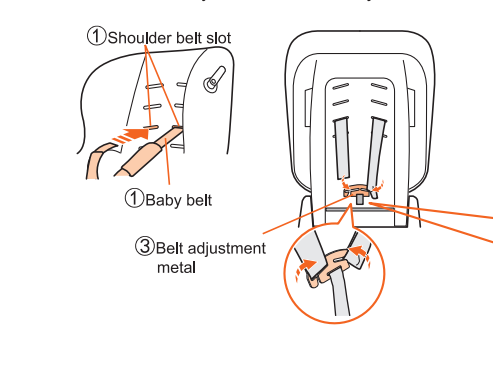
- 1 ① Flip the belt adjustment outlet cover and pull up the belt adjustment button.  
② Grasp the left and right baby belts and pull them forward and down.  
※ In case of using shoulder belt cover for child, do not pull on the shoulder belt covers, as this will not loosen the baby belts.



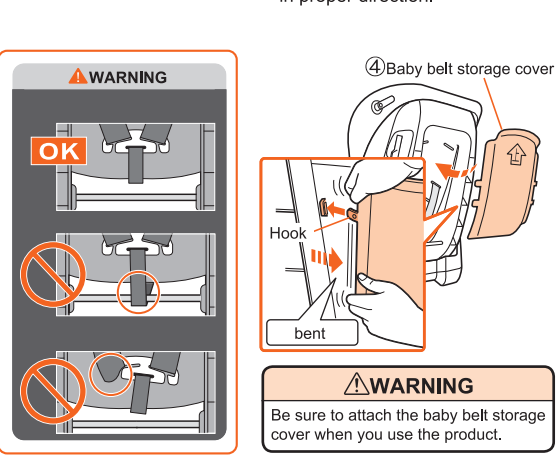
- 2 ① Remove the baby belt storage cover on the rear surface of main body.  
② Unhook the left and right baby belts from the belt adjustment metal.



- 4 ① Insert the baby belt carefully in the proper shoulder belt slot not to twist it.  
② Pull out the baby belts from the back of the main body.  
③ Attach the baby belts to the belt adjustment metal.



- ④ Attach the baby belt storage cover in proper direction.



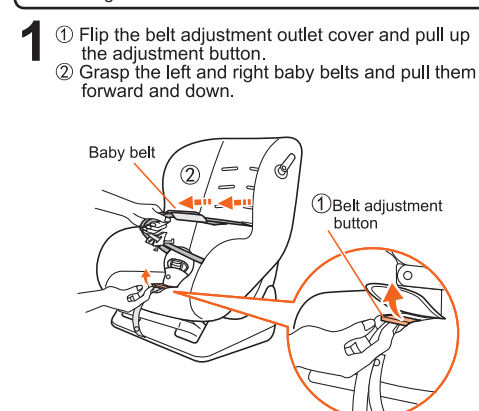
### Change to the shoulder belt cover for child

### DANGER

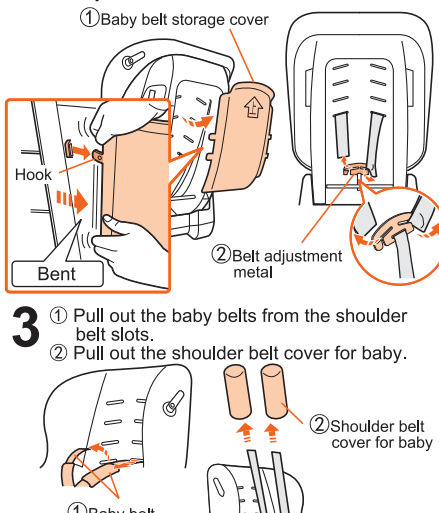
When you use the product for forward facing, be sure to use the shoulder belt cover for child.

### WARNING

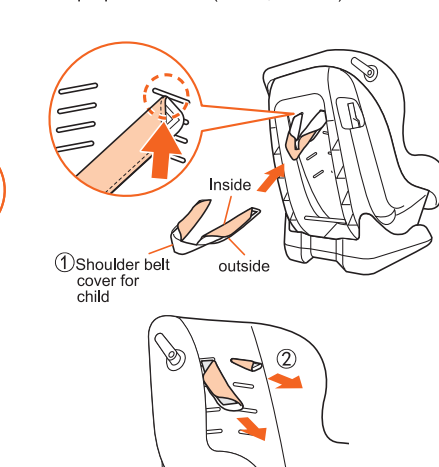
Use left and right baby shoulder belt slots that are the same height.



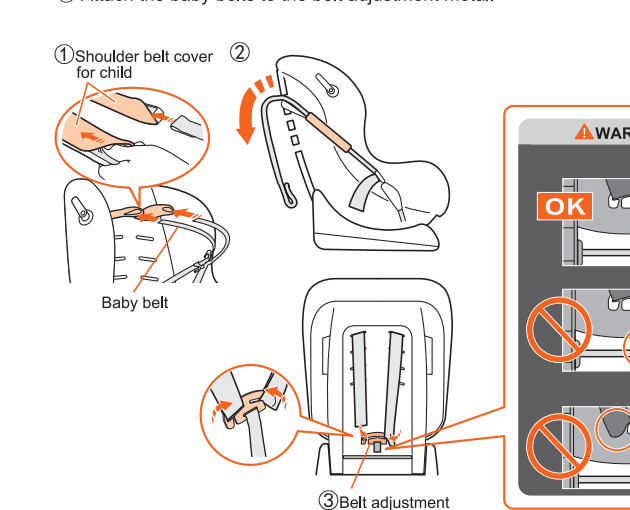
- 2 ① Remove the baby belt storage cover on the rear surface of main body.  
② Unhook baby belts from the belt adjustment metal.



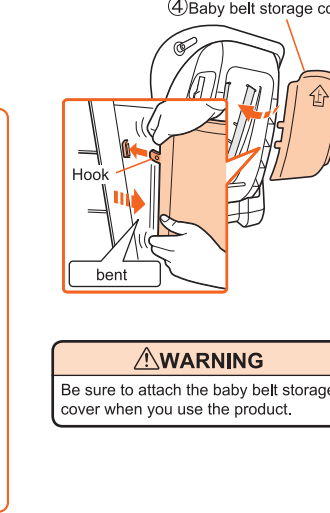
- 4 ① Insert the shoulder belt cover for child through appropriate slot from backside of the main body.  
② Pull out from the front side of the main body.  
※ Attach the shoulder belt cover for child in proper direction (inside, outside).



- 5 ① Route the baby belt through the shoulder belt cover for child, make sure they are not twisted.  
② Pull out the baby belts from the back of the main body.  
③ Attach the baby belts to the belt adjustment metal.

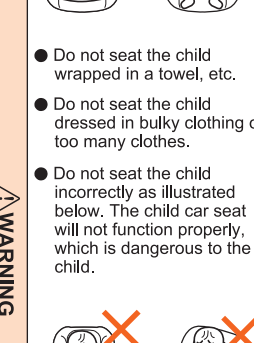


- ④ Attach the baby belt storage cover in proper direction.



## 15. Seating the child

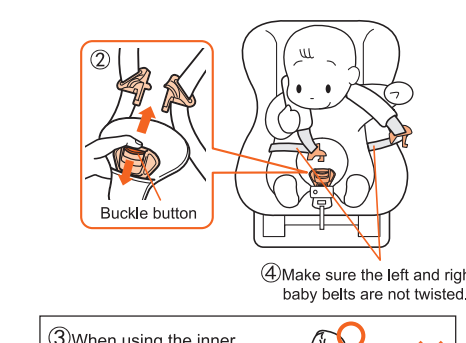
- Do not dress the child in clothes in which the child's legs cannot be separated.
- Do not seat the child wrapped in a towel, etc.
- Do not seat the child dressed in bulky clothing or too many clothes.
- Do not seat the child incorrectly as illustrated below. The child car seat will not function properly, which is dangerous to the child.



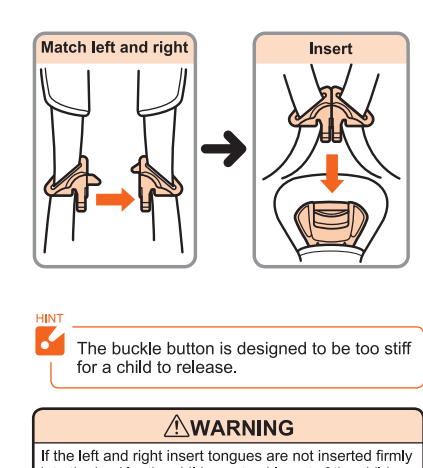
- Do not use the product when the adjustment belt is not fixed to the hook in the front of the seat cover. Otherwise, the belt may wind around the neck to cause suffocation.
- Adjust the shoulder belt covers for baby so that they fit both right and left shoulders of the baby.



- 1 ① Perform step 1 of "Adjusting the baby shoulder belt position to suit the child."  
② Press the buckle button to unfasten the insert tongue from the buckle.  
③ Seat the child deeply into the child car seat and pass the child's left and right arms through the baby belt.  
④ Make sure that the left and right baby belts are not twisted.

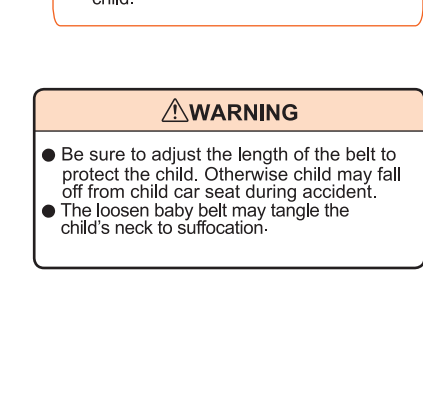


- 2 Match the left and right insert tongues and insert them into the buckle until they lock with a "click" sound.



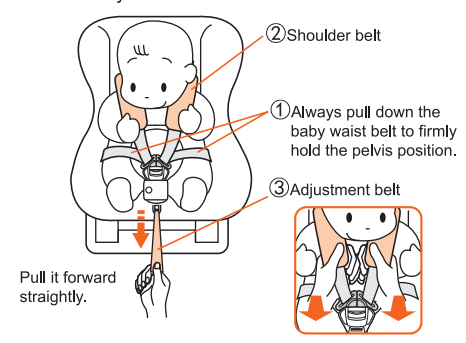
※ The buckle button is designed to be too stiff for a child to release.

- ③ When using the inner cushion, seat the child deeply into the child car seat so that there is no gap.



### 3 Shorten the baby belt

- ① Always adjust the baby waist belt so that it snugly holds the child's pelvis at the lowest position.
- ② The baby shoulder belt should always be located in the center of the child's shoulder.
- ③ Pull the adjustment belt toward you, and adjust the length of the baby belt so that there is a palm's space between the child's body and the baby belt.



- Be sure to adjust the length of the belt to protect the child. Otherwise child may fall off from child car seat during accident.
- The loosen baby belt may tangle the child's neck to suffocation.

