

Combi

Combi Child Car Seat SafeTrip



For more information,
you can scan this QR code.

User Manual

- For the safety of the child, please read this user manual carefully before use and use the child car seat properly.
- Store this user manual in the storage pocket of the base cover.

This product is an i-Size child car seat / i-Size booster seat and it is certified according to the UN R129/ 03 standard.

- This product can be installed to vehicle seats approved for installation of ISOFIX child car seats. However, this does not mean that this child car seat can be installed to any vehicle seat equipped with ISOFIX anchors (bars) and top tether anchoring. When using the child car seat, be sure to read the Car Owner's Manual before use.
- This mode is only suitable for vehicles equipped with 3-point seatbelts approved under UN R16 standard or other equivalent standards.

[Child seat mode]

- Applicable child: Height of 76cm to 105cm and weight of up to 18kg.

[Junior seat mode]

- Applicable child: Height of 100cm to 150cm and weight of up to 36kg.



CAUTION

To avoid causing stress to the child, avoid continuous long-time usage and give the child a break from the child car seat about once every hour.



DANGER

Do not use forward facing before the child's age exceeds 15 months and before the child's height exceeds 76cm.

1.Before Use

<About using second-hand child car seats>

- Never use a child car seat with an unclear usage history.
- Never use a child car seat if it has cracks, large scratches or loose fasteners.

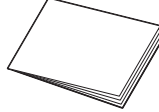
The child car seat is designed to reduce injury to child in case of traffic accident, etc. However, there is no guarantee that the child car seat can completely protect the child from injury. A child using the child car seat must be accompanied by an adult.

1.1 Package contents

• Main body



• User manual (this manual)



• ISOFIX insertion guide



• Cup holder



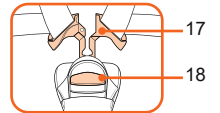
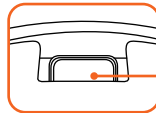
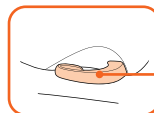
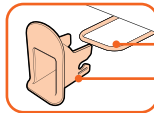
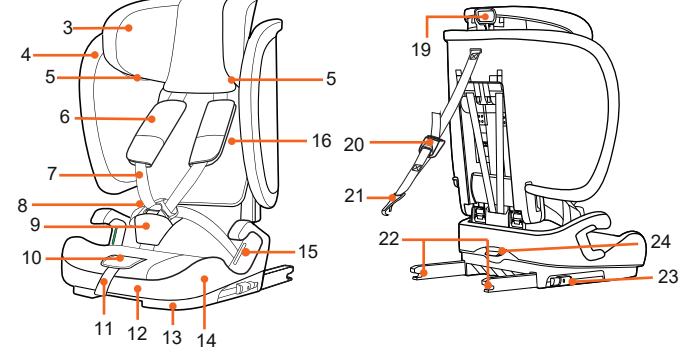
Combi Corporation

81367-007

1.2 Name of Parts

Check that all parts are present before use.

- Store the receipt (purchase invoice) together with this manual.
- This manual uses simplified illustrations to help users easily understand operation and handling, and there may be slight differences from the actual product.



①ISOFIX insertion guide

②ISOFIX anchor

③Head guard

④Seat Cover

⑤Shoulder belt guide

⑥Shoulder belt cover

⑦Shoulder belt

⑧Waist belt

⑨Crotch belt cover

⑩Baby belt

adjustment button

⑪Adjustment belt

⑫Recline Handle

⑬Base

⑭Insert tongue

(Cup holder can be inserted on both side of the seat for installation.)

⑮Waist belt guide

⑯User manual

storage pocket (Inside)

⑰Insert tongue

⑱Buckle

⑲Head guard adjustment lever

⑳Tensioner

㉑Tensioner Top tether hook

㉒ISOFIX connector

㉓ISOFIX connector

adjustment lever

㉔Folding button

When using the junior seat mode (100-150cm)

Depending on the type of seatbelt, the child car seat may not be able to be installed or may be installed differently.
This mode is only suitable for vehicles equipped with a 3-point seatbelt approved under UN R16 standard or other equivalent standards.

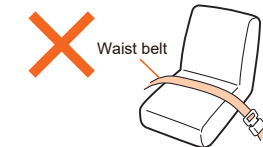


DANGER

- Be sure to install the child car seat on a vehicle seat with a 3-point seatbelt.
- Never install the child car seat on a vehicle seat with a 2-point seatbelt. Installing the child car seat on such a vehicle seat may prevent the child car seat from functioning properly, which is dangerous to the child.

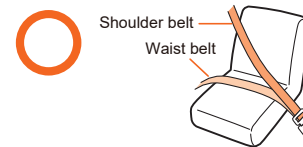
2-point seatbelt

As shown in the figure, a seatbelt that does not have a shoulder belt and supports the body at two points on the right and left of the waist belt.



3-point seatbelt

As shown in the figure, a seatbelt that supports the body at three points: the right and left sides of the waist belt and the shoulder belt.



1.3 Use conditions

Mode	Child seat mode	Junior seat mode
Use status		
Applicable child height	76cm~105cm	100cm~150cm
Adjusting the baby shoulder belt position	Adjust the head guard height so that the baby shoulder belt is at or slightly above the child's shoulder. 	Adjust the head guard height so that the shoulder area belt guide is slightly above the child's shoulder.
Method of Restraining Children	Restrain the child with a baby belt.	Store the baby belt and restrain the child directly with the vehicle seatbelt.
How to fasten the child car seat in the vehicle	Fasten the child car seat in the vehicle seat with the ISOFIX connector and top tether.	1.Fasten the child car seat in the vehicle seat with the ISOFIX connector and a vehicle seatbelt that restrains the child. 2.Fasten the child car seat in the vehicle seat with a vehicle seatbelt that restrains the child.



DANGER

Improper handling will result in imminent risk of death or serious injury.

- Do not seat a child who does not satisfy the use conditions, or install the child car seat to an inapplicable vehicle seat.
- Do not install the child car seat to a vehicle seat equipped with a front airbag. In case of collision, the deploying air bag will strongly impact the child seat, which is dangerous to the child.
...Installation is possible to a vehicle seat with only a side airbag.
- Do not install the child car seat by a method other than described in this user manual and indicated on the main body.
- Do not allow the child to stand, crouch or kneel on the child car seat.
- In the child seat mode, this product cannot be fastened with a vehicle seatbelt.
- When you seat your child in the junior seat mode, make sure that the vehicle seatbelt insert tongue is properly inserted into the vehicle buckle and will not come out.



Emergency Escape

- In case of accident or other emergency, an accompanying adult should press the buckle button to release the baby belt (the vehicle seatbelt in the junior seat mode) and evacuate the child from the vehicle immediately.



WARNING

Improper handling will result in imminent risk of death or serious injury.

- The child car seat may suffer structural damage in the event of collision or even if it is dropped one time or falls from a high level. In this case, immediately stop using the child car seat even if no damage is visible.
- Do not leave the child alone in the vehicle. On days with strong sunlight, the temperature inside the vehicle may become high and the child may become dehydrated. It may also cause unexpected accidents. A child using the child car seat must be accompanied by an adult.
- Do not modify or improperly repair the child car seat, or operate the child car seat in the way other than that recorded in this instruction manual.
- Keep the child chair fastened with the connector and top tether (in the child seat mode) or the vehicle seatbelt (in the junior seat mode) even when the child is not sitting. Otherwise, the child car seat may roll inside the vehicle, interfering with driving in case of sudden braking.
- Do not install the child car seat to a vehicle seat where it may obstruct the exit of other passengers from the vehicle in an emergency.
- Please replace the child safety seat after severe accident.
- If you have any unfastened objects in the vehicle, be careful as they may hit the child in the event of any sudden braking or a collision. Please properly place the luggage and items that are liable to be damaged in collision.
- Do not put hot drinks into the cup holder.
- Set the cup holder to the side away from the vehicle door in case it gets jammed in between the door and the booster seat.
- Pay attention and prevent child from leaning its baby to the cup holder.
Otherwise damage may be caused to the cup holder.

In the child mode:

- Always keep the baby belt fitting snugly. A loose belt may become wrapped around the child's neck and result in suffocation.
- If the buckle becomes jammed with dirt, food crumbs or other objects and cannot be fastened securely or is too stiff to release easily, contact Combi's Customer Service Center for repair.
- If the baby belt is damaged, cannot be use, contact Combi's Customer Service Center for repair.
- Always fasten the adjustment belt to the seat cover when using the child car seat. Cannot be use, a loose belt may become wrapped around the child's neck and result in suffocation.
- The child may press the buckle button. Make sure that the insert tongue is not out of the buckle. If it comes out, the baby belt will not work properly and may become wrapped around the child's neck.

In the Junior seat mode:

- Do not install the child car seat in a seat with the vehicle seatbelt damaged in any way.
- When using a vehicle seatbelt with a child seat fastening function, do not enable fastening. The belt will be too tight around the child and their chest will be compressed.

Applicable Vehicle Seats

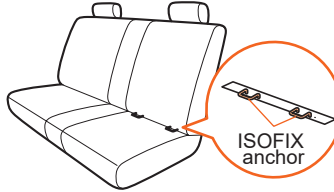
This child car seat can be installed to vehicle seats approved for installation of ISOFIX child car seats. However, this does not mean that the child car seat can be installed to any vehicle equipped with ISOFIX anchors (bars).
When using the child car seat, always check the vehicle compatibility chart and check the user manual of the vehicle to make sure the ISOFIX size classes noted below are supported.

ISOFIX size classes of this product

Height of the child	Anchors	Height of the child	Anchors
76cm ~ 105cm	F2X	100cm ~ 150cm	B2

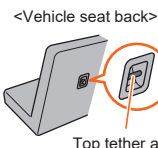
ISOFIX anchoring system

ISOFIX anchors are metal fixtures (bars) provided between the vehicle backrest and seat in order to install an ISOFIX child car seat. The name and position may differ according to the vehicle, so always check the user manual of the vehicle.



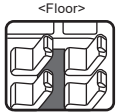
Top tether anchoring system

Top tether anchors are metal fixtures (bars) equipped with the vehicle in order to secure the top tether hook. The name and position may differ according to the vehicle, so always check the user manual of the vehicle.



Top tether anchor

※ Example of the top tether anchor position.



CAUTION

Improper handling may result in injury or damage to property.

- Make sure the child car seat does not get jammed between the vehicle doors or other movable parts.
- Exposing the child car seat to direct sunlight may case the main body, insert tongue and other parts to become hot and burn the child. Touch each part and check that it is not too hot before seating the child.
- Depending on the shape and surface material (leather, etc.) of the vehicle seat, scratches or marks may remain on the vehicle seat after installation.
- If you use the child car seat as a normal chair, the child sitting may fall off and be injured. Only use the child car seat as described in this user manual.
- Do not use the child car seat with the seat cover and other sewn parts or the urethane and other cushioning removed. Also do not replace these parts with parts not specifically authorized by Combi for this product. (This may negatively affect safety performance in the event of collision.)
- Users should be especially careful when fastening or adjusting the child car seat to prevent fingernails or artificial nails from becoming jammed in gaps or moving parts.
- Do not operate or adjust the child car seat while driving. Also, make sure that other children on board do not touch the child car seat.
- Do not install, remove or carry the child car seat with a child on it. Do not carry the child car seat with the baby belt.
- Do not expose the child car seat to wind or rain.
- Product seat cushion contains battery, do not use this product if children have a pacemaker, or artificial lung, or wear an ECG, or any other internal medical device.
- Some cups or beverages may not fit in the cup holder, so make sure the cups or beverages can be secured in the cup holder. And ensure that the cup or drink can be secured in the cup holder before use.

Inapplicable Vehicle Seats

Do not install the child car seat to a vehicle seat that meets any of the following conditions.

Do not use the child car seat if it cannot be secured firmly, even if none of the conditions noted below apply.

- We do not recommend mounting car seat on the front passenger seat regardless of if there are airbags or not space; thus we have not conducted a vehicle model compatibility survey on the front passenger seat.
 - Only when used in child seat mode.
Vehicle seat that is not equipped with ISOFIX anchors (bars) and top tether anchor.
 - Vehicle seat facing backwards or sideways relative to driving direction.
 - Vehicle seat equipped with a front airbag.
...Installation is possible to a vehicle seat with only a side airbag.
 - Vehicle seat with a seat an extremely uneven surface that prevents stable installation.
 - Extreme shaped bucket seat
...Vehicle seat that goes deep in the center of the seat base.
 - Vehicle seat with extremely protruding vehicle headrest.
...Due to the shape of the vehicle headrest, it is not possible to recline the back of the seat or adjust the headrest of the child car seat.
※ If the headrest of the vehicle seat can be removed, which enables reclining or adjusting the headrest, the child car seat can be attached to such a seat.
 - Do not install it if the car seats or doors are movable.
- Only when used in the junior seat mode
- Vehicle seat that is not equipped with a vehicle seatbelt.
 - Vehicle seat with a 2-point seatbelt.
 - Vehicle seat with an extremely short vehicle seatbelt.
 - Vehicle seat with a passive seatbelt.
※ Passive seatbelt ...A device that automatically attaches the vehicle seatbelt when you sit in a vehicle seat and close the door (Automatic seat belt).
 - Vehicle seat with a vehicle seatbelt coming from the middle of the seat.
...Vehicle seat where the seatbelt comes from a position before the waist belt guide of the child car seat.

1.4 Preparation of Installation

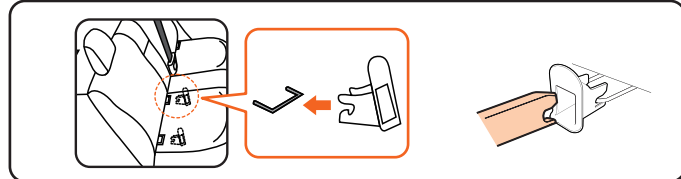


DANGER

- Do not install the child car seat by a method other than described in this user manual and indicated on the main body.
- This product cannot be fastened using the vehicle seatbelt in the child seat mode.
- Do not install the child car seat to a vehicle seat equipped with a front air bag. In the event of an accident, an ejected airbag can pose a great danger to young children.

- Park the vehicle in a flat location where doors can be fully opened.
Slide the front seat forward and tilt the backrest to the front to create space for easier installation to the vehicle.
- Remove the vehicle headrest if possible.
※ Store the removed vehicle headrest in the trunk or cargo compartment.
Recline the vehicle seat backrest slightly if possible.
- Fit the ISOFIX insertion guides onto the ISOFIX anchors.
※ However, note that attaching the ISOFIX connectors may increase the gap between the back of the base and seat backrest for some vehicle seats. In these cases, install the child car seat without using the ISOFIX connectors.

※Example

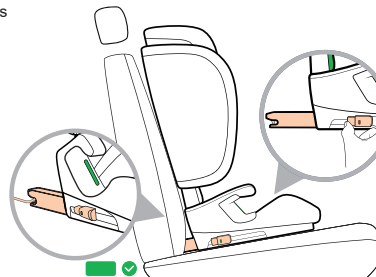


1.5 Installing the ISOFIX connector

- Press down and hold the ISOFIX adjuster button on both sides of the child safety seat and pull it out horizontally to the longest at the same time.
- Fit the ISOFIX connectors onto the right and left ISOFIX anchors of the vehicle seat and push the ISOFIX connectors until they lock with a 'click' sound, at this time, and the 2 sides ISOFIX indicator turns "Green" to complete the installation successfully.
- Push the child car seat base until the back of the child car seat touches the vehicle seat backrest.
- Hold the base and try to rock the child car seat in all directions to make sure it is installed securely after the installation.

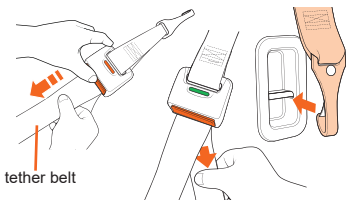
Uninstalling method

Simultaneously press down and hold the ISOFIX button on both sides of the child safety seat base until hear the sound of unlocking before pull out the seat.



1.6 Installing the Top tether

- 1) While pressing the tensioner release button. Pull the tether belt to loosen.
- 2) Pull the top tether long enough to hang the Top Tether hook on the fixed point, which on the back of the vehicle seat.
- 3) Make sure the top tether strap is tightened up and make sure the Tensioner into green safety color. The "BiBi" alarm sound stops.



1.7 Battery

Batteries are included in the factory. Before first use, the battery protection strip must be removed from the battery compartment.

Battery replacement

Please use a 3V button cell battery, CR2032 is recommended.

- 1) Lift up the upper seat cover and foam.
- 2) Open the battery cover with your hand. The battery is installed in the designated position.
- 3) The text needs to face up, The battery should be underneath of the gold positive electrode, insert the battery at the angle of 45°, the battery does not fall, is the correct installation.
- 4) Then put the battery cover on.

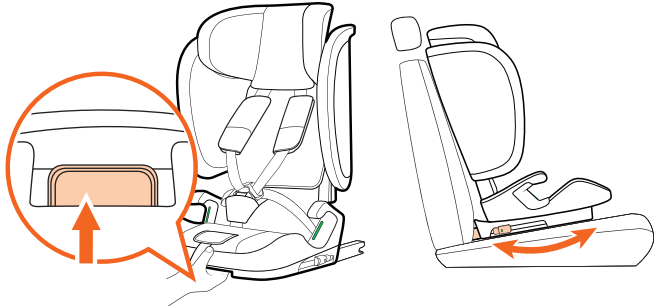
※ Turning on the switch, the alarm is raised when the upper pull top tether is not tightened, and it is not raised when it is tightened.

Battery management

- Depending on the battery life and usage behavior, it may be necessary to change the batteries. It is recommended to replace the battery at least once every six months. If the batteries are empty, the tether alert function signals are not active.
- Battery turn off button is only allow for storage mode. When using the car seat mode, please make sure tether alert function is "ON".
- When re-installing the top tether (re-installing the seat to the vehicle), please make sure that there is a "BiBi" alarm sound before installing it correctly according to 1.6. If there is no alarm sound, please make sure the tether indicator showed as green so that the car seat can be used normally.
- To change the batteries, you have to open the battery compartment. After changing the batteries, this compartment must be closed again.
- Do not reverse the positive and negative terminals when mounting.
- Always remove the empty batteries.
- Keep all batteries out of reach of children.
- Do not subject the batteries to severe shock.
- Never expose this product or the batteries to fire.
- Do not store the batteries in a hot and humid environment.
- Do not disassemble the batteries. Do not short-circuit the batteries.
- Remove the batteries in case of longer storage.
- Batteries from different manufacturers may have different service intervals, this is a normal phenomenon.
- After the battery is removed, please follow the notes on purchasing batteries to keep it safe, and do not let children touch it to avoid the danger of children swallowing it.

1.8 Seat Angle adjustment

- 1) Pull the Recline Handle up, then the seat can be adjusted.
 - 2) 76-150cm: facing forwards installation, use 1st to 5th level.
- ※ When Install the child safety seat you need adjust it to the first level. The backrest has 10° adjustment (95°-105°) to suit different vehicle.



1.9 Adjusting the baby shoulder belt position

Please refer to the "Position of Child Shoulder Belt "in" 1.3 Conditions of Use".

When using as the child seat mode.

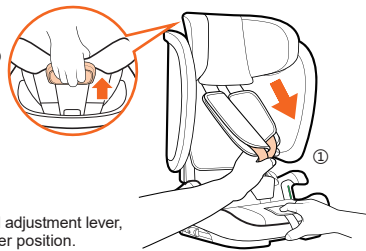
- ① While pressing the baby belt adjustment button, pull both the left and right baby belts forward to loosen the baby belts.

※ Do not pull on the shoulder belt covers, as this will not loosen the baby belts.

- ② Pull up the head guard adjustment lever, adjust the height of the head guard to a proper position.

When using as the junior seat mode.

Please refer to Fig②, pull up the head guard adjustment lever, adjust the height of the head guard to a proper position.



2. Storage Mode

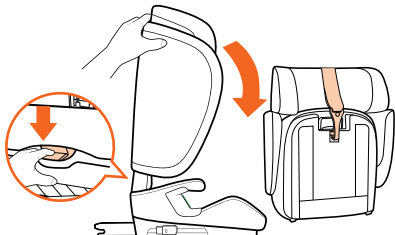
- 1) Store the ISOFIX connector. Pull the Headrest Height Adjuster then adjusting the Headrest to a sixth level height. Press the Folding Button with one hand and the other hand push the backrest forward until it can cover the Base entirely.

※ Seat tilt position is in first level.

- 2) When folding the Top Tether Clip must be fastened at the connecting bar.
- ※ If you want to recover, push the backrest to the upright position.

Store the child car seat in storage mode :

※ When the child car seat is stored for a long time in the storage mode, recesses and wrinkles may remain in the head guard, backrest, seat base and other sewn products.



CAUTION

- If you want to transport the child car seat in storage mode using your vehicle, be careful the child car seat does not fall down or turn over, endangering you while you drive.
- Avoid storing the child car seat near any heat sources or at high temperatures such as inside the vehicle in the summer.
- Do not store the child car seat with packages on it. It may cause failure or deformation.

When carrying the child car seat in the storage mode.

Hold it from below with both hands as shown. In this step, confirm that the child car seat is fastened with the tether belt so that it is not wobbling, confirm that the ISOFIX connector is completely stored.

CAUTION

- If you put the child car seat on the floor or the like, put it gently so as not to damage it. If you drop it or place it roughly, it will lead to damage, and causing failure or deformation.
- Do not place it on any soil or any other dirty places. It may cause failure or deformation.
- If you carry the child car seat, make sure that it is fastened and is not wobbling.



3.Using Child Seat Mode



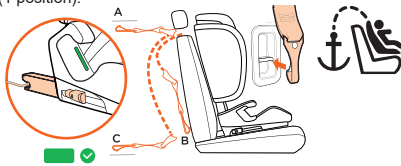
Forward facing installation
Applicable height:76-105cm

3.1 Installing to the Vehicle

- 1) Follow step 1.7 to adjust the angle (1 position).

- 2) Install the ISOFIX connector by following the steps in Section 1.5, push the child car seat firmly the seat is snug against the back of the car seat.

- 3) Secure the top tether by follow the steps in Section 1.6.



3.2 Seating the Child

- 1) Press the baby belt adjustment button to loosen the baby belts.

※ Do not pull on the shoulder belt covers, as this will not loosen the baby belts.

- 2) Press the buckle button and remove the insert tongue from the buckle. Seat the child deeply into the child car seat and pass the child's arms through the left and right baby belts.

- 3) Make sure that the right and left baby belts are not twisted.

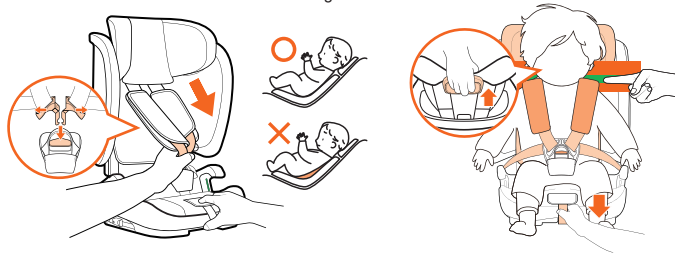
- 4) Match the left and right insert tongues and insert them into the buckle until they lock with a "Click" sound. Make sure that the buckle had installation.

- 5) Pull down the baby waist belt to firmly hold the pelvis position. The baby shoulder belt should always be located of the child's shoulder.

※ For height adjustment of the baby shoulder belt, refer to 1.3. Head guard Position, please refer to 1.8.

- 6) Pull the adjustment belt toward you.

- 7) Adjust the length of the baby belt. Make sure the distance between child's shoulder and the bottom of the headrest is lower than one finger.



WARNING

- Do not use the child car seat if the indicator does not change to green when the insert tongue is inserted into the buckle.
- Check that the baby belt is not twisted or loose. Always pull down the baby waist belt to firmly hold the pelvis position.
- Always adjust the baby belt to the proper length. If the baby belt is not fit to the child's body, the child may tumble out of the child car seat in the event of collision or a loose baby belt may wrap around the child's neck and result in suffocation.

3.3 Checklist after Installation

After installation, check the following to make sure that the child car seat is installed properly.

- ① Please ensure that the child car seat is tightly fastened against.
- ② Check that the color of ISOFIX connector indicators show the locked condition ("green" is shown).
- ③ Hold the base and try to rock the child car seat in all directions to make sure it is installed securely.
- ④ Check that the tensioner indicator shows 'green'.
- ⑤ Check that the right and left sides of the child car seat main body and the vehicle seat are parallel. (The ISOFIX connector is not pushed further on only one side.)

If you have any questions, please contact Combi's Customer Service Center.

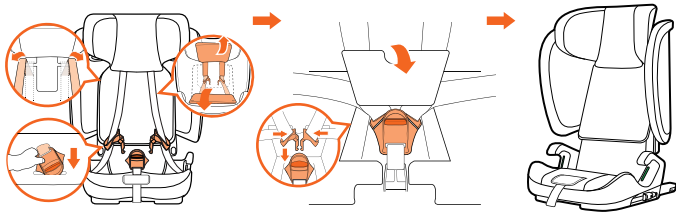
4. Using Junior Seat Mode



Forward facing installation
Applicable height:100-150cm

4.1 Child Seat Mode Changing to Junior Seat Mode

- ① Loosen the Shoulder Straps by pressing the Adjustment Button and pull both shoulder straps forwards. Loosen it as much as possible.
 - ② Open the Buckle. Remove Crotch cover and Shoulder cover.
 - ③ Remove elastic from base.
 - ④ Pick up the fabric cover, pull the buckle through the inside of the center strap hole, and then pull out the fabric cover. Pick up the transparent bottom cover plate, reconnect the buckle, and then put the seat belt buckle into the bottom base, finally put the seat fabric cover back.
- ※ To restore to the child seat mode, follow the steps above in reverse order.



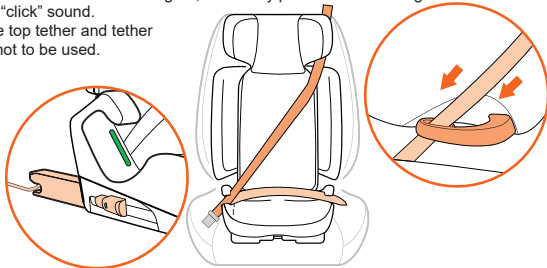
4.2 Installing to the Vehicle

- 1) Install the ISOFIX connector by following the steps in Section 1.5.

(This step can be ignored if the ISOFIX connection is not used).

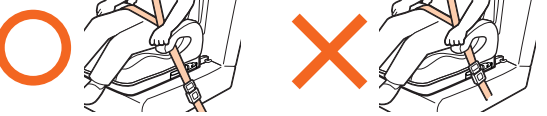
- 2) Pull out the car seatbelt, then run it through the shoulder belt guide and the left and right lap belt guides of the seat as shown in the figure, and finally push the buckle tongue into the buckle until you hear a "click" sound.

※ Please store the top tether and tether belt, which are not to be used.



WARNING

If the vehicle buckle or insert tongue hits the child car seat body and the vehicle seatbelt becomes loose, the installation becomes unstable. Do not use the child car seat unless it is stable.

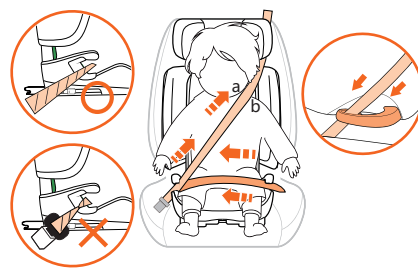


4.3 Seating the Child

- 1) Pull the vehicle seat belt insert tabs out of the vehicle latch to allow the child to be seated deeply in the child safety seat, adjusting the headrest height according to the child's shoulder position.

- 2) Pull out the vehicle seat belt, guide it through the shoulder strap and the left and right belts of the seat as shown in the figure, and finally buckle the buckle piece on the buckle seat until you hear a click, if the vehicle seatbelt is loose, pull the vehicle seatbelt (shoulder area) upward to adjust the tension.

※ Keep the shoulder belt at the position of belt guidance between the outside of the neck and shoulder (in the middle of point a and point b).



WARNING

The shoulder area belt guide adjusts the vehicle seatbelt (shoulder area) so that it is fastened in the correct shoulder position for the child. As the child grows and the shoulder area belt guide is lowered, readjust the height of the head guard.

WARNING

- Check that the vehicle seatbelt is not twisted or loose.
- Always pull down the vehicle seatbelt (waist area) to firmly hold the pelvis position.
- This product becomes unstable if it is not fastened with the vehicle seatbelt. If the child gets on and off by them self without the assistance of an adult, they may slide off the vehicle seat or fall down. Be sure to have an adult take them down.
- Make sure that the child's arm comes over the vehicle seatbelt.
- Do not allow the children to ride by mistake. Otherwise, the functioning of the child safety seat may be impaired, which can be dangerous.
 - Make sure that the child's arm comes over the vehicle seatbelt.
 - The child squeezes or leans forward.
 - The child is sitting with their body leaning to the left or right.
 - Children should sit upright, don't put the feet on the child car seat when the child is sitting.

4.4 Checklist after Installation

After the child is seated and the vehicle seatbelt is fastened, check the following to make sure that the child car seat is installed properly.

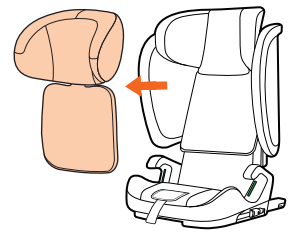
- ① Please ensure that the child car seat is tightly fastened against.
- ② Check that the vehicle seatbelt has passed through the shoulder area belt guide, does not compress the child's neck and is not off the shoulder of the child.
- ③ Check that the vehicle seatbelt fits the child and is not twisted or loose.
- ④ Check that the vehicle seatbelt is around the child's pelvis position.
- ⑤ Check that the insert tongue of the vehicle seatbelt is securely inserted into the vehicle buckle and cannot be disconnected.
- ⑥ Check that the vehicle seatbelt passes through the right and left waist belt guides.
- ⑦ Check that the connector release button indicator shows "green".
- ⑧ Check that the right and left sides of the child car seat main body and the vehicle seat are parallel. (The ISOFIX connector is not pushed further on only one side.)

5. Attaching and Removing the Covers

※ Installation is the reverse procedure from removal.

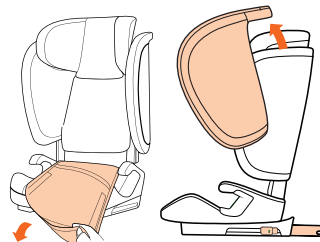
5.1 Removing the headrest cover.

- 1) Lift the headrest.
- 2) Remove the head guard installing rubber rings from the back of the head guard.
- 3) Remove the head guard cover from above.



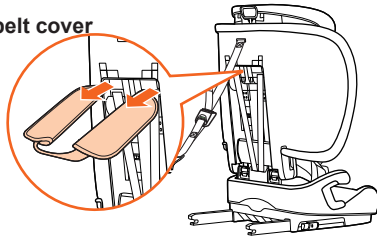
5.2 Removing the seat cover.

- 1) Remove the sides of the backrest cover from the backrest side groove of the child car seat body.
- 2) Remove the seat cover from above.



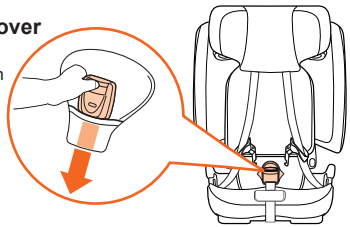
5.3 Removing the shoulder belt cover

- 1) Removing the child safety belt after loosening the shoulder belt cover.
- 2) Pull out the left and right shoulder belt covers at the back of the seat.



5.4 Removing the crotch belt cover

Unlock the child safety belt, pull the buckle strap with one hand, and pull out the crotch belt cover with the other hand.



6. Maintenance Method

Washing the seat cover and other sewn parts.



Warm water washing & machine wash (gentle cycle)



Do not bleach



Dry



Do not iron



Do not dry clean



Do not tumble dry

Maintenance of the main body

Normally wipe clean with a well-wrung wet (water) cloth. When extremely dirty, remove the dirt using a solution or neutral detergent diluted with water, then wipe with a wet (water) cloth and dry in shade.

Polyurethane materials

When the product is not in use for a long period of time, remove it from the seat of the car and store it in a well-ventilated place out of direct sunlight and out of the reach of children.

WARNING

Do not use undiluted neutral detergent, gasoline, benzene or other organic solvents when cleaning. These may damage the main body and baby belt, which is dangerous to the child.

7. Storage and Disposal

Storage

Main body

When the child car seat will not be used for a long period of time, uninstall it and store in a well-ventilated place out of direct sunlight and away from children.

Disposal

- When disposing of the child seat, follow the standards of your municipality or region.
- The child car seat may suffer structural damage in the event of collision or even if it is dropped one time or falls from a high level. In this case, immediately stop using stop using the child car seat even if no damage is visible. When disposing of the child car seat after an accident, remove the seat cover and other parts before disposal to prevent the child car seat from being reused.