

Combi

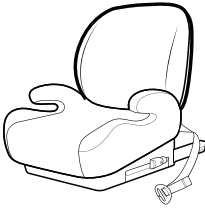
Combi Child Car Seat JOYTRIP BOOSTER plus



For more information,
you can scan this QR code.

User Manual

- For the safety of the child, please read this user manual carefully before use and use the child car seat properly.
- Store this user manual in the storage of the base.



This product is a Universal booster cushion child car seat and it is certified according to the UN R129/ 03 standard.

- This product in the Universal booster cushion category are designed for use in all i-Size and all Universal seating positions. When using the child car seat, be sure to read the Car Owner's Manual before use.
- This mode is only suitable for vehicles equipped with 3-point seatbelts approved under UN R16 standard or other equivalent standards. If in doubt, consult either the Enhanced Child Restraint System manufacturer or the retailer.
- Applicable child: Height of 125cm to 150cm and weight of up to 36kg.

CAUTION

To avoid causing stress to the child, avoid continuous long-time usage and give the child a break from the child car seat about once every hour.

DANGER

Do not use the child car seat if the child does not meet the following conditions height: 125 cm to 150 cm.

1.3 Use conditions

Mode	Adjusting the baby shoulder belt position
Forward facing (installation facing forward relative to driving direction)	Adjust the head guard height so that the shoulder area belt guide is slightly above the child's shoulder.

Applicable child height	Method of Restraining Children	How to fasten the child car seat in the vehicle
Height of 125cm to 150cm	Fasten the child directly with a car seat belt.	1. Fasten the child car seat in the vehicle seat with the ISOFIX connector and a vehicle seatbelt that restrains the child. 2. Fasten the child car seat in the vehicle seat with a vehicle seatbelt that restrains the child.

WARNING The shoulder guide positioner must be used. Otherwise, the shoulder belt will be slipping off and lead to danger.

DANGER

Improper handling will result in imminent risk of death or serious injury.

- Do not seat a child who does not satisfy the use conditions, or install the child car seat to an inapplicable vehicle seat.
- Do not install the child car seat to a vehicle seat equipped with a front airbag. In case of collision, the deploying air bag will strongly impact the child seat, which is dangerous to the child. ...Installation is possible to a vehicle seat with only a side airbag.
- Do not install the child car seat by a method other than described in this user manual and indicated on the main body.
- Do not allow the child to stand, crouch or kneel on the child car seat.
- Make sure that the vehicle seatbelt insert tongue is properly inserted into the vehicle buckle and will not come out.

Emergency Escape

- In case of emergency, parents should immediately unbuckle the seat belt of the vehicle so that children can escape from the vehicle in time.

WARNING

Improper handling will result in imminent risk of death or serious injury.

- The child car seat may suffer structural damage in the event of collision or even if it is dropped one time or falls from a high level. In this case, immediately stop using the child car seat even if no damage is visible.
- Do not leave the child alone in the vehicle. On days with strong sunlight, the temperature inside the vehicle may become high and the child may become dehydrated. It may also cause unexpected accidents. A child using the child car seat must be accompanied by an adult.
- Do not modify or improperly repair the child car seat.
- Keep the child chair fastened with the connector and the vehicle seat belt or the vehicle seat belt even when the child is not sitting. Otherwise, the child car seat may roll inside the vehicle, interfering with driving in case of sudden braking.
- If a two or three-door vehicle has a person in the back seat, do not attach the child car seat to the front passenger seat. It will prevent the child from escaping in an emergency.
- Do not install the child car seat in a seat with the vehicle seatbelt damaged in anyway.
- When using a vehicle seatbelt with a child seat fastening function, do not enable fastening. The belt will be too tight around the child and their chest will be compressed.
- Please replace the child safety seat after severe accident.
- If you have any unfastened objects in the vehicle, be careful as they may hit the child in the event of any sudden braking or a collision. Please properly place the luggage and items that are liable to be damaged in collision.
- Do not put hot drinks into the cup holder.
- Set the cup holder to the side away from the vehicle door in case it gets jammed in between the door and the booster seat.
- Pay attention and prevent child from leaning its baby to the cup holder. Otherwise damage may be caused to the cup holder.

1. Before Use

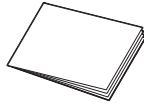
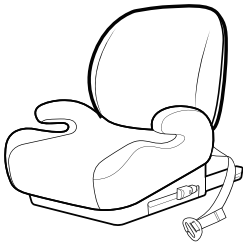
<About using second-hand child car seats>

- Never use a child car seat with an unclear usage history.
- Never use a child car seat if it has cracks, large scratches or loose fasteners.

The child car seat is designed to reduce injury to child in case of traffic accident, etc. However, there is no guarantee that the child car seat can completely protect the child from injury. A child using the child car seat must be accompanied by an adult.

1.1 Package contents

- Main body
- User manual (this manual)
- Cup holder



ISOFIX insertion guide



Combi Corporation

200556030

Applicable Vehicle Seats

This child car seat can be installed to vehicle seats approved for installation of ISOFIX child car seats. However, this does not mean that the child car seat can be installed to any vehicle equipped with ISOFIX anchors (bars). When using the child car seat, always check the vehicle compatibility chart and check the user manual of the vehicle to make sure the ISOFIX size classes noted below are supported.

ISOFIX size classes of this product

Height of the child	Anchors
125cm ~ 150cm	B2

ISOFIX anchoring system

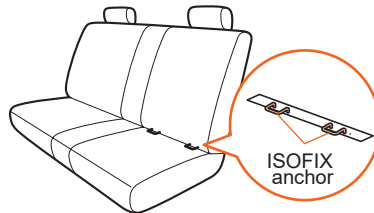
ISOFIX anchors are metal fixtures (bars) provided between the vehicle backrest and seat in order to install an ISOFIX child car seat. The name and position may differ according to the vehicle, so always check the user manual of the vehicle.



i-Size



ISOFIX



DANGER

Improper handling may result in injury or damage to property.

- Make sure the child car seat does not get jammed between the vehicle doors or other movable parts.
- Exposing the child car seat to direct sunlight may cause the main body, insert tongue and other parts to become hot and burn the child. Touch each part and check that it is not too hot before seating the child.
- Depending on the shape and surface material (leather, etc.) of the vehicle seat, scratches or marks may remain on the vehicle seat after installation.
- If you use the child car seat as a normal chair, the child sitting may fall off and be injured. Only use the child car seat as described in this user manual.
- Do not use the child car seat with the seat cover and other sewn parts or the urethane and other cushioning removed. This may negatively affect safety performance in the event of collision.
- Users should be especially careful when fastening or adjusting the child car seat to prevent fingernails or artificial nails from becoming jammed in gaps or moving parts.
- Do not operate or adjust the child car seat while driving. Also, make sure that other children on board do not touch the child car seat.
- Do not install, remove or carry the child car seat with a child on it.
- Do not expose the child car seat to wind or rain.
- Do not install a child car seat on a vehicle seat with cushions on it. The child seat will not be firmly fastened.
- Some cups or beverages may not fit in the drink holder, so make sure the cups or beverages can be secured in the drink holder. And ensure that the cup or drink can be secured in the cup holder before use.

Inapplicable Vehicle Seats

Do not install the child car seat to a vehicle seat that meets any of the following conditions.

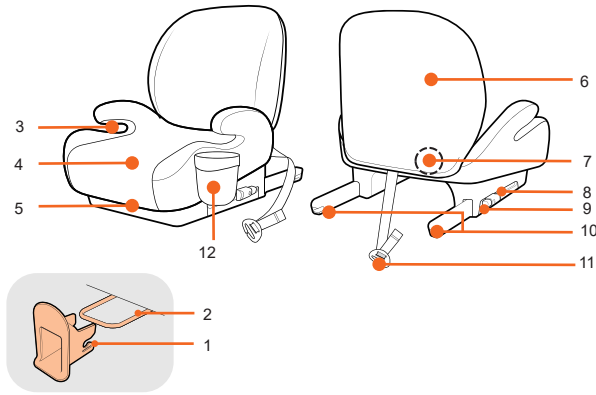
Do not use the child car seat if it cannot be secured firmly, even if none of the conditions noted below apply.

- We do not recommend mounting car seat on the front passenger seat regardless of if there are airbags or not space; thus we have not conducted a vehicle model compatibility survey on the front passenger seat.
- Vehicle seat facing backwards or sideways relative to driving direction.
- Vehicle seat equipped with a front airbag. ...Installation is possible to a vehicle seat with only a side airbag.
- Vehicle seat with a seat an extremely uneven surface that prevents stable installation.
- Extreme shaped bucket seat ...Vehicle seat that goes deep in the center of the seat base.
- Vehicle seat that is not equipped with a vehicle seatbelt.
- Vehicle seat with a 2-point seatbelt.
- Vehicle seat with an extremely short vehicle seatbelt.
- Vehicle seat with a passive seatbelt. ...Passive seatbelt ...A device that automatically attaches the vehicle seatbelt when you sit in a vehicle seat and close the door (Automatic seat belt).
- Vehicle seat with a vehicle seatbelt coming from the middle of the seat ...Vehicle seat where the seatbelt comes from a position before the waist belt guide of the child car seat.

1.2 Name of Parts

Check that all parts are present before use.

- Store the receipt (purchase invoice) together with this manual.
- This manual uses simplified illustrations to help users easily understand operation and handling, and there may be slight differences from the actual product.



- ISOFIX insertion guide
- ISOFIX anchor
- Waist guide
- Seat Cover
- Seat Base
- Backrest/ Backrest Cover
- Unlock Buttons
- Indicator
- ISOFIX unlock bottom
- ISOFIX Connector
- Shoulder guide
- Cup holder
(Cup holder can be inserted on both side of the seat for installation.)

Types of Vehicle Seatbelts and Precautions for Use

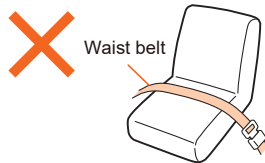
Depending on the type of seatbelt, the child car seat may not be able to be installed or may be installed differently. This mode is only suitable for vehicles equipped with a 3-point seatbelt approved under UN R16 standard or other equivalent standards.

DANGER

- Be sure to install the child car seat on a vehicle seat with a 3-point seatbelt.
- Never install the child car seat on a vehicle seat with a 2-point seatbelt. Installing the child car seat on such a vehicle seat may prevent the child car seat from functioning properly, which is dangerous to the child.

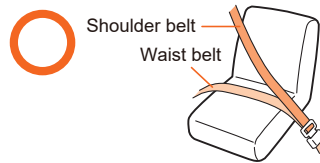
2-point seatbelt

As shown in the figure, a seatbelt that does not have a shoulder belt and supports the body at two points on the right and left of the waist belt.



3-point seatbelt

As shown in the figure, a seatbelt that supports the body at three points: the right and left sides of the waist belt and the shoulder belt.



Types and characteristics of seatbelts (differentiation)	Precautions for installation
ELR	Pull the seatbelt slowly to move it in and out freely, and pull it vigorously to lock it. Slowly pull out the seatbelt and attach the child car seat.
AELR	If you pull out all the seatbelt and then let it rewind, the child car seat securing function will work and you will not be able to stretch the seatbelt anymore. (It will be released when the entire anymore seatbelt is rewound.) It is dangerous to completely pull out the seatbelt. Return the seatbelt once to cancel the child car seat securing before attaching the child car seat.
Other	Seatbelts that do not apply to the above. The other seatbelts cannot be used.

※ If you are unsure of the type of seat belt, please contact your automobile manufacturer.

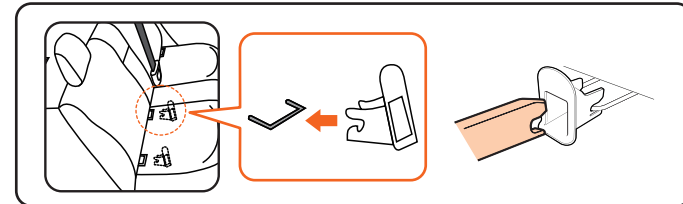
1.4 Preparation of Installation

DANGER

- Do not install the child car seat by a method other than described in this user manual and indicated on the main body.
- Do not install the child car seat to a vehicle seat equipped with a front air bag. In the event of an accident, an ejected airbag can pose a great danger to young children.

- Park the vehicle in a flat location where doors can be fully opened. Slide the front seat forward and tilt the backrest to the front to create space for easier installation to the vehicle.
- Attaching the vehicle headrest if possible. Recline the vehicle seat backrest slightly if possible.
- Fit the ISOFIX insertion guides onto the ISOFIX anchors. ※ However, note that attaching the ISOFIX connectors may increase the gap between the back of the base and seat backrest for some vehicle seats. In these cases, install the child car seat without using the ISOFIX connectors.

Example

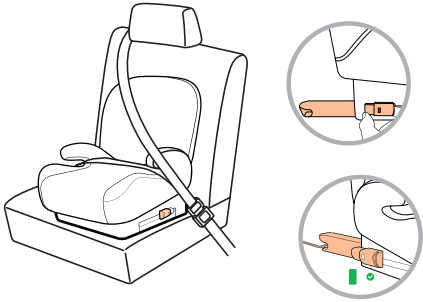


1.5 Installing the ISOFIX Connector

- 1) Press down and hold the ISOFIX adjuster button on both sides of the child safety seat and pull it out horizontally to the longest at the same time.
- 2) Fit the ISOFIX connectors onto the right and left ISOFIX anchors of the vehicle seat and push the ISOFIX connectors until they lock with a 'click' sound, at this time, and the 2 sides ISOFIX indicator turns "Green" to complete the installation successfully.
- 3) Push both sides of the child seat base firmly until the rear of the safety seat is in contact with the seat back.
- 4) Hold the base and try to rock the child car seat in all directions to make sure it is installed securely after the installation.

Uninstalling method

Simultaneously press down and hold the ISOFIX button on both sides of the child safety seat base until hear the sound of unlocking before pull out the seat.
※To protect the ISOFIX connector, please store it inside.

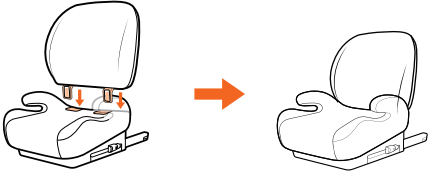


1.6 Attaching and Removing the backrest

The seat and backrest come unassembled in the sales package.

1. Insert the Waist Cushion vertically at a 90 degree angle into the interface of the Seat Base.
2. When separating the backrest and base, please use your fingers to hold down the backrest unlock button.

※Can be used without the backrest.



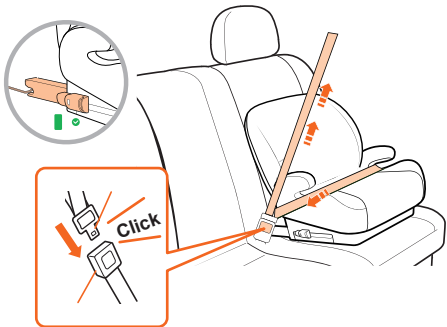
2. Using Junior Seat



Forward facing installation
Applicable height: 125-150cm

2.1 Installing to the Vehicle

- 1) Install the ISOFIX connector by following the steps in Section 1.5.
(This step can be ignored if the ISOFIX connection is not used, that the ISOFIX connector is completely stored.)
- 2) Pull out the car seatbelt, then run it through the shoulder belt guide and the left and right lap belt guides of the seat as shown in the figure, and finally push the buckle tongue into the buckle until you hear a "click" sound.



! WARNING

If the vehicle buckle or insert tongue hits the child car seat body and the vehicle seatbelt becomes loose, the installation becomes unstable. Do not use the child car seat unless it is stable. If you have any questions, please contact Combi's Customer Service Center.



2.2 Seating the Child

- ① Place this product on the vehicle seat once, have your child sit deep in the child car seat.
- ② Pull the vehicle seatbelt forward.
- ③ Pass the vehicle seatbelt through the right and left waist belt guides.
- ④ Insert the insert tongue into the vehicle buckle until they lock with a 'click' sound.
- ⑤ Pass the vehicle seat belt through the shoulder area belt guide, adjust the head guard height so that the shoulder area belt guide is slightly above the child's shoulder.
- ⑥ Please ensure that the vehicle seat belt (shoulder strap) is located above both armrests.

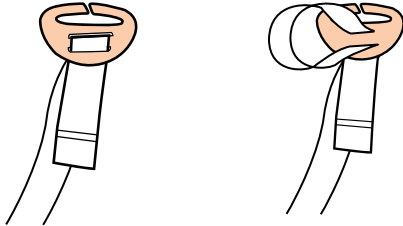


! WARNING

The shoulder area belt guide adjusts the vehicle seatbelt (shoulder area) so that it is fastened in the correct shoulder position for the child. As the child grows and the shoulder area belt guide is lowered, readjust the height.

Adjustment method of shoulder guide strap

Shorten or lengthen the shoulder strap guide strap, please adjust according to below.



! WARNING

- Check that the vehicle seatbelt is not twisted or loose.
- Always pull down the vehicle seatbelt (waist area) to firmly hold the pelvis position.
- This product becomes unstable if it is not fastened with the vehicle seatbelt. If the child gets on and off by them self without the assistance of an adult, they may slide off the vehicle seat or fall down. Be sure to have an adult take them down.
- Sitting the child as below may cause the child car seat to function improperly, which is dangerous to the child.
- Make sure that the child's arm comes over the vehicle seatbelt.
- The child squeezes or leans forward.
- The child is sitting with their body leaning to the left or right.
- Children should sit upright, don't put the feet on the child car seat when the child is sitting.

2.3 Checklist after Installation

After the child is seated and the vehicle seatbelt is fastened, check the following to make sure that the child car seat is installed properly.

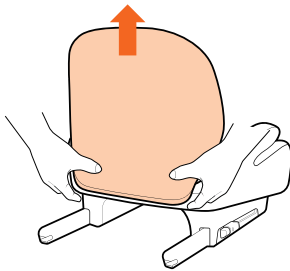
- ① Please ensure that the child car seat is tightly fastened against.
- ② Check that the vehicle seatbelt has passed through the shoulder area belt guide, does not compress the child's neck and is not off the shoulder of the child.
- ③ Check that the vehicle seatbelt fits the child and is not twisted or loose.
- ④ Check that the vehicle seatbelt is around the child's pelvis position.
- ⑤ Check that the insert tongue of the vehicle seatbelt is securely inserted into the vehicle buckle and cannot be disconnected.
- ⑥ Check that the vehicle seatbelt passes through the right and left waist belt guides.
- ⑦ Check that the connector release button indicator shows "green".
- ⑧ Check that the right and left sides of the child car seat main body and the vehicle seat are parallel. (The ISOFIX connector is not pushed further on only one side.)

3. Attaching and Removing the Covers

3.1 Removing the backrest cover.

Remove the backrest cover from the bottom to the top.

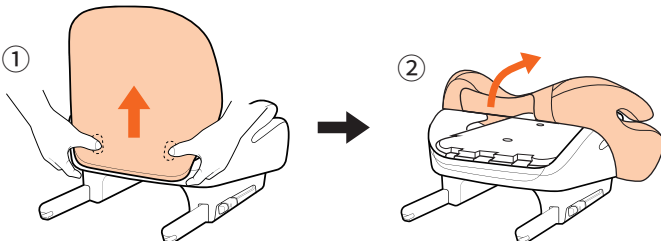
※Installation is the reverse procedure from removal.



3.2 Removing the seat cover.

- 1) Remove the backrest from the child car seat body.
- 2) Loosen the rubber band on the back of the seat cover.
- 3) Remove the seat cover from above.

※Installation is the reverse procedure from removal.



4. Maintenance Method

Washing the seat cover and other sewn parts.



Warm water
Hand Wash / Washing Machine
wash(gentle cycle)



Do not bleach



Dry



Do not iron



Do not dry clean



Do not tumble dry

Maintenance of the main body

When the product is not in use for a long period of time, remove it from the seat of the car and store it in a well ventilated place out of direct sunlight and out of the reach of children.

Polyurethane materials

When the product is not in use for a long period of time, remove it from the seat of the car and store it in a well-ventilated place out of direct sunlight and out of the reach of children.

! WARNING

Do not use undiluted neutral detergent, gasoline, benzene or other organic solvents when cleaning. These may damage the main body and baby belt, which is dangerous to the child.

5.Storage and Disposal

Storage

Main body

When the child car seat will not be used for a long period of time, uninstall it and store in a well-ventilated place out of direct sunlight and away from children.

Disposal

- When disposing of this child seat, please follow the regulations in region.
- The child car seat may suffer structural damage in the event of collision or even if it is dropped one time or falls from a high level. In this case, immediately stop using stop using the child car seat even if no damage is visible. When disposing of the child car seat after an accident, remove the seat cover and other parts before disposal to prevent the child car seat from being reused.