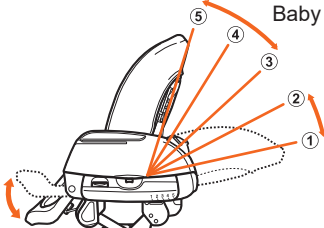




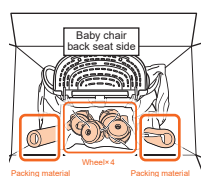
Important! Please read it carefully and keep it safe for future reference.

Below parts may not be included or the shape may differ according to different model. Always lock the swivel wheels to use except when moving the chair.

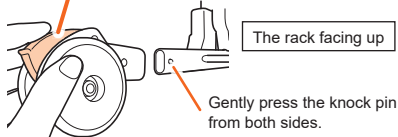
Age reference		Newborn ~ 2, 3 months	2, 3 months ~ 5, 6 months		5, 6 months ~ 18 months	18 months ~ 48 months
Seat belt	Shoulder belt	Compulsory usage	Compulsory usage		Compulsory usage	—
	Waist / Crotch belt	Compulsory usage	Compulsory usage		Compulsory usage	Compulsory usage
Backrest angles		①	① ②	③	③ ④ ⑤	③ ④ ⑤
Backrest angles ● W/ or W/O Swing Function		Simple infant bed (Weight: 2.5~≤8kg)		Baby chair (Weight: below18kg)		
		Available swing function/Do not use the table		Cannot use swing function/can use table		
						

Applicable age: 0-48 months, maximum weight for simple infant beds: below 8kg, maximum weight for baby Chair: below 18kg.

① Method of installing wheels



The stopper is on the upper side



The wheels come unassembled in the sales package.
Before using the product, please install the wheels.

- ① First, take the wheels out of the carton. Do not remove the packing materials.
- ② Fold down the carton with the upper side of the rack facing up.

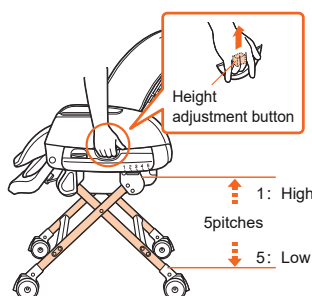
Then, slowly take the product out of the carton.

Assembly Method

- ① Hold the wheels with the wheel stoppers on the upper side of the rack.
- ② Insert the wheel until it clicks while gently pressing the knock pin from both sides.

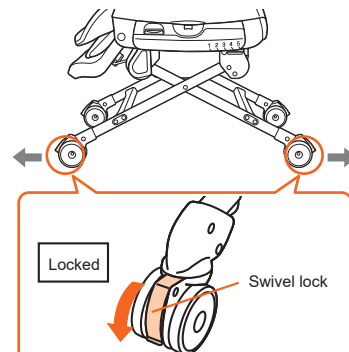
※ Make sure that there is no cushioning materials left on the main body.

② Adjusting height of chair



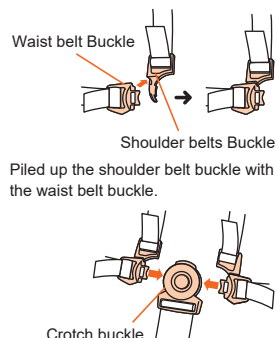
Press and hold on the left and right height adjustment button underneath the side armrest. Lift or lower the main body until it reaches your desired position and release the buttons.

③ Using the swivel wheels



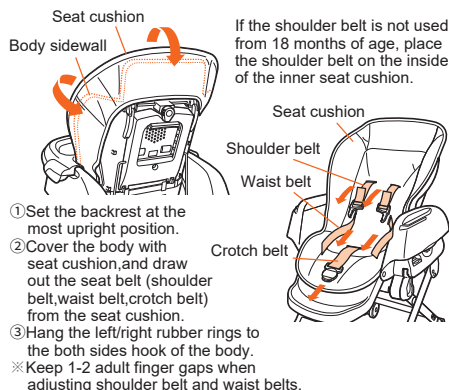
The swivel wheel should be locked on the outer side as illustrated.

④ Using the seat belt



Piled up the shoulder belt buckle with the waist belt buckle.

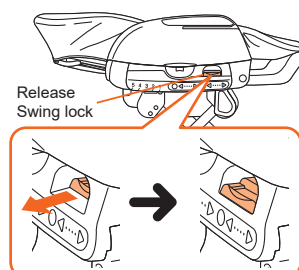
⑤ Using the seat cushion



- ① Set the backrest at the most upright position.
- ② Cover the body with seat cushion, and draw out the seat belt (shoulder belt, waist belt, crotch belt) from the seat cushion.
- ③ Hang the left/right rubber rings to the both sides hook of the body.

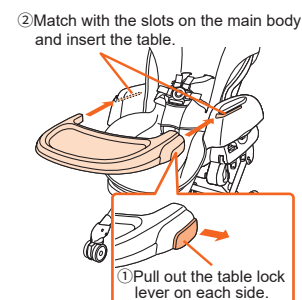
※ Keep 1-2 adult finger gaps when adjusting shoulder belt and waist belts.

⑥ Using as a swinging bed



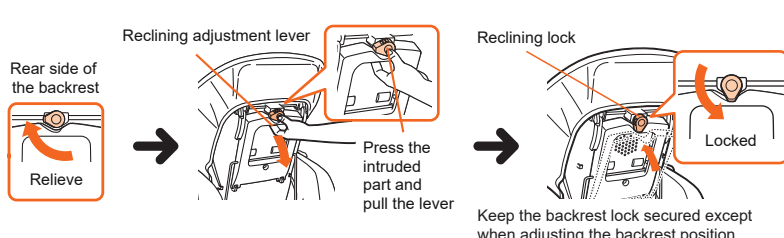
Lock the swivel wheel, set the lie-flat angle, pull the swing lock out to do the release.

⑦ Attaching the table



- ② Match with the slots on the main body and insert the table.
- ③ Make sure the table is well secured by slightly move before use. Table can be adjusted to 3 different positions.

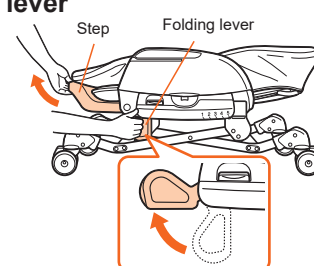
⑧ Adjusting the backrest angle



Keep the backrest lock secured except when adjusting the backrest position.

⑨ Using the folding lever

If the dining chair needs to be folded and stored, Lift on the step and to release the folding levers on the left and right respectively. Other than folding the chair, do not use the folding lever."





WARNING (Improper usage may cause danger.)

- Never leave your baby unattended.
- Always use the restraint system.
- Do not use the baby reclined cradle if any components are damaged or missing.
- Do not use any accessories or replacement parts not approved by the manufacturer.
- Do not use the product unless all components are correctly fitted and adjusted.
- Be aware of the risk of open fire and other sources of strong heat in the vicinity of the product
- A simple infant bed cannot replace infant bed, if baby need sleep, The baby should be placed in a suitable infant bed.
- Be aware of the risk of tilting when your child can push its feet against a table or any.
- Always use the locking device when not moving.
- When unfolding and folding the product, keep children away to avoid injury.

To prevent accidents happening

- Do not allow children to climb under the Swing Rack or operate or play with the Swing Rack. Only adults are allowed to adjust or operate the Swing Rack.
- Keep this product out of the reach of baby.
- Always use it as a reclined cradle for a temporary period during the daytime. Avoid the baby from lying prone in case it may accidentally suffocate.
- Do not use the product at the following places or situations:
 - Places where there is heater or any other heating device nearby.
 - Places where there is humidifier nearby.
 - Under rainy weather Places or Places with high humidity such as bathroom.
 - Places where there are strong magnetic field.
 - Places where there are on slope, staircase, leveling, tile or other slippery floors.
- Do not place your fingers or hands in slots or gaps between legs of the Swing Rack to avoid getting pinched when operating the product. Also, keep fingers and hands of your children away from the danger of getting pinched.
- Do not use the swing function continuously for more than 15 minutes.
- Do not swing the product violently. Be sure to lock the swing function when using the product for daily use other than using the swing function.
- Do not disassemble, repair or modify the chair. Never open the lower lid.
- If any damage or malfunction occurs, please contact our customer service center or your local agent immediately.
- Use the reclining adjustment lever when adjusting the backrest position. Keep the backrest lock secured except when adjusting the backrest position.
- Keep plastic coverings away from children to avoid suffocation.

According to ASTM F404 standard.

- The child should be secured in the high chair at all times by the restrain system, both in the recline and upright position.
- The tray is not designed to hold the child in the chair.
- It is recommended that the high chair be used in the upright position only by children capable of sitting upright unassisted.

To prevent child from falling

- If you find any wear, scratches, blurring or buckle damage on your safety belt, stop using it immediately.
- Adjust the seat belt to proper length according to child's body size. please lay along the shoulder to the shoulder belt outlets. Re-adjust the seat belt again every time after changing the backrest angle. Try to pull the seat belt to check if they are secured.
- If the safety belt is not attached correctly, cross over the shoulder belts to use, it may wrap around your child's neck and cause suffocation. Seat improper installation may cause the child fall from the chair while in use.
- The tray is not designed to keep the child in the Swing Rack and its position shall be adjusted accordingly as the child grows. Do not move the Swing Rack by holding the tray. Never allow children to stand on the Swing Rack, the tray or the armrest. Also, do not allow children to lean out of the tray or the guardrail.
- Do not lift or move the chair, and operate the height adjustment lever or the folding lever when a child in the chair.
- Never use for more than one child at once. pay attention to other children nearby, and do not let them to climb on the chair.
- Please adjust the length of the shoulder/the waist belt to remain at least 3cm for the tip of belt. Please adjust the crotch belt to remain at least 5cm for the tip of belt. The child might fall if the shoulder/ the waist belt got loosen during use. Please check all the buckles by pulling the shoulder/ the waist belt strongly after installation.

Fall Hazard

Children have suffered severe head injuries including skull fractures when falling from high chairs. Falls can happen suddenly if child is not restrained properly.

- In order to avoid accidents, always use restraints and adjust to fits snugly.
- Table Tray is not designed to hold the children.
- Parental guardian always stay near and watch child during use.
- Prevent serious injury or death from falls or sliding out.
- Always secure child in the restraint.
- Never leave the child unattended.
- Always lock the swivel wheels to use except when moving the chair.
- Please read the instruction manual carefully before use and use accordingly.
- Swing function can be used only when using the product as an infant bed. Never use swing function when using as a baby chair.
- Swinging must be done by an adult. Do not swing the bed violently. Do not swing more than 15 minutes continuously.
- Do not insert any metallic parts through the gaps or openings on the main body.
- Apply swing function only on a flat surface. In case of swing stopping or malfunctioning, move the chair to a flat surface to use. Slope or other surfaces may cause the swing to malfunction. Swing may become difficult or not smooth, in such case switch the swing level to a level higher.



CAUTION (Improper usage may result in injury or damage to product.)

- Do not put the child on the seat with the cushion removed. The holes and protrusions on the back and the seat surface may injure the child.
- Using as swing function
 - Do not switch on the swing when the chair is empty.
 - Do not use swinging function in 30 minutes after feeding that may cause the baby to vomit.
 - The main body will swing forward and backward when using the swinging function. Ensure there is no obstacle near the chair before use.
 - Pay attention to the baby. Stop using immediately when any abnormal situation is found.
 - Never use the chair in a folded position.
- Beware of your hands and etc. when folding the chair. Also, beware your feet in case the wheels may move forward or backward when folding the chair.
- If your child moves his/her feet a lot and hits the sides of the unit, please wear a sock or something similar before use.

Maintenance Method

Washing the seat cover and other sewn parts

- Please remove the seat cushion, inner cushion, and central belt cover. Always follow the washing instructions listed below as well as those attached to the various fabric parts.
- When using the washing machine to wash, please put the seat cushion into the laundry net to avoid the deformation of the clothes.
- Do not use detergent with fluorescent or a bleach as it may cause rough skin and eczema.
- It is recommended to wash spin separately with other clothes, and avoid soaking.



Warm water washing & machine wash(gentle cycle)



Do not bleach



Dry



Do not iron



Do not dry clean



Do not tumble dry

Storage

- Do not load any heavy items or add on extra pressure on the chair. Otherwise, the main body may get deformed, or damage may be caused to the main body.
- Wheels or swivel locks may get slippery with dirt. Wipe off dirt with a piece of damp cloth after soaking it with diluted neutral detergent.
- Restore each part properly after cleaning according to the instruction manual.

Maintenance of the main body and baby belt

- Normally wipe clean with a well-wrung(water) cloth or sponge to wipe.
- For heavier soiling, wash with a diluted neutral detergent and wipe with a wrung- well-wrung(watery) towel. After cleaning, place in a cool place to dry.



CAUTION

Do not use undiluted neutral detergent, gasoline or other organic solvent to clean the main body frame.

※ Due to the characteristic of the product, the color may fade after numbers of washing.

Name: Parenting Station
Model: Nemulilla Fit
Specifications: Adjustable
Applicable age: 0 months ~ 48 months
Simple crib for the maximum weight: below 8kg
Dining chair for maximum weight: below 18kg
Main components or materials:
• Metal parts: aluminum alloy,
• Plastic parts: PP polypropylene,
• Cushion fabric parts: cotton, polyester
• Capacity: 1

Combi Corporation