

Combi

Combi Child Car Seat CrossAge 360 SL



獲取更多信息，您可以掃描此二維碼

使用說明書

- 為了您孩子的安全，請於使用前閱讀本使用說明書，在理解後，按照記載內容來正確使用。
- 閱讀本使用說明書後，請將說明書存放在兒童安全座椅的背部存儲區域。

本產品是通過UN R129/03標準的i-Size 兒童安全座椅和特種車輛用增高型安全座椅。

本產品只可安裝在已被認可可能安裝ISOFIX型兒童安全座椅的汽車座椅上。但是這並不表示可以安裝已經配備ISOFIX固定支架的任何汽車上。當使用此產品時，請務必參考汽車使用手冊及適用車輛型號表，確認ISOFIX尺寸等級是否適合安裝。

- 【幼童用座椅模式】
- 兒童條件：身高40cm～105cm、18kg為止。
- 可供前向安裝使用和後向安裝使用。
- 【兒童用座椅模式】
- 兒童條件：身高100cm～135cm、36kg為止。
- 僅適用於配備UN R16 或其他基於等效標準批准的三點式安全帶的車輛。



危險	注意
在兒童月齡未達到 15 個月且身高未達到 76cm 之前，請勿前向使用本產品。	長時間使用會造成幼兒負擔，盡量避免長時間連續使用，建議每使用一個小時便稍作休息。

1.3 使用條件

模式	幼童用座椅模式	兒童用座椅模式
	相對行車方向後向安裝	相對行車方向前向安裝
使用狀態		
適用身高	40cm-105cm	76cm-105cm
背靠角度	僅限使用1檔	可以使用1~4檔
兒童肩帶的位置	請將肩帶調節至小孩肩膀一樣或肩膀下的位置。 	兒童肩帶的高度和肩膀高度一樣，或者調節到比肩膀稍高的位置。
頭墊和身體墊的使用方法	幼兒身高在40-83cm以下時，必須同時使用頭墊和身體墊。 ●請務必正確安裝內墊，並在充分貼合兒童身體的狀態下使用。	不使用
約束小孩的方法	●五點式安全帶 ×汽車安全帶	●五點式安全帶 ×汽車安全帶
固定方法	●ISOFIX ●支撐腿 ×汽車安全帶	●ISOFIX ●支撐腿 ×汽車安全帶

危險

以下的錯誤操作，非但不能發揮兒童安全座椅應有功能，更會引致危險。

- 請勿讓不符合使用條件的幼童乘坐本兒童安全座椅，或是安裝在不合適的汽車座椅上。
- 請勿安裝於設有安全氣囊的汽車座椅。意外時彈出的氣囊會造成重大衝擊，對幼兒構成危險。
... 只設有側氣囊的座椅可進行安裝。
- 請按照使用說明書及本體上的指示將座椅固定，請不要用其他方式固定。
- 請勿讓幼童在兒童安全座椅上站立、蹲身或跪坐在座面上。
- 幼童用座椅模式時不能用車輛安全帶固定安全座椅。
- 兒童用座椅模式使用時，當孩子坐好後，要確保車輛安全帶插扣已經緊扣於車輛鎖扣中，沒有脫出。

緊急逃脫

- 有緊急事故時，家長請按下插口座的按鈕，鬆開兒童安全帶【兒童用座椅模式的情況下，則需解除車輛安全帶】，令幼童可以逃出車外。

警告

以下的錯誤操作，非但不能發揮本產品應有功能，更會引致危險。

- 幼童用座椅模式時，請不要在安全帶過鬆的情況下使用本兒童安全座椅，以免意外時幼童跌出，或令安全帶纏脖子引致窒息。
- 兒童安全座椅經過強烈撞擊或從高處墜下會因撞擊後受損而失去保護功能，即使表面沒有破損也絕對不能再使用。請更換兒童安全座椅。
- 不要讓幼兒單獨一個人留在車內。陽光強烈的日子，車內溫度升高，有可能使幼兒脫水而引致死亡危險。這也是發生意外事故的根源。不要將兒童在無人照看的情況下放置在兒童安全座椅內。所以，幼兒必須與大人一同乘坐方可使用。
- 假如插扣片被垃圾或食物殘渣卡住而無法插緊，又或是因某些原因而未能鬆開插扣片，請聯絡客戶服務部或當地代理商，進行檢查或維修。
- 兒童安全帶如果有損壞的情形，請不要使用。如需維修請向經銷商查詢。
- 調節帶沒有固定在座墊裡的時候，請勿使用，否則有纏繞脖子窒息的可能。
- 請勿擅自改造兒童保護裝置，或以本使用說明書記載以外的方法操作本兒童保護裝置。
- 即使是幼兒沒有坐到兒童座椅上的時候，也請務必使用連接器進行固定。否則當發生緊急剎車等情況時，會翻倒在車內，會造成危險。
- 請勿安裝在緊急情況下會阻礙同乘乘客逃出的座席上。
- 在幼童用座椅模式時，幼兒也許有解開安全帶扣的可能性，所以要隨時留意並確認插入的扣片是否脫離安全帶扣。鬆脫時將會導致功能失效或令安全帶纏脖子引致窒息。
- 在兒童用座椅模式下使用時，若發現汽車安全帶損壞時，請不要在该汽車座椅上進行安裝。
- 在兒童用座椅模式下使用時，假如座席上具備座椅固定功能，請先將此功能解除，否則幼童可能因過度約束感到胸部受壓。
- 當遭受劇烈事故後，應更換兒童安全座椅。

1.使用前

- 承蒙購買本公司產品兒童汽車座椅，深表感謝。
使用前請仔細閱讀本說明書，然後正確使用。
〈關於舊貨的使用〉
- 嚴禁使用既往使用來歷不明的產品。
 - 當出現破裂或是較大傷痕、固定零件鬆動等情況時，請勿使用。

兒童安全座椅是在交通意外等情況發生時，為盡量減少損傷而設計的，但不保證完全沒有受傷。在使用兒童安全座椅時，大人也必須同行。

1.1 包裝內容

- 本體
- 說明書(本書)
- ISOFIX 蓋子

Combi Corporation

191936060

可以安裝的座席

本兒童汽車安全座椅適合安裝在經批准可用於安裝 ISOFIX 兒童汽車安全座椅的汽車座椅上。然而，這並不意味著本兒童汽車安全座椅可以安裝到任何配備 ISOFIX 固定支架(柱) 的汽車上。使用本兒童汽車安全座椅時，請務必檢查車輛的合規性並查閱汽車用戶手冊，以確保支持以下所述的 ISOFIX 尺寸等級。

本產品的 ISOFIX 尺寸等級

使用方法	固定器
後向安裝	ISO/R2
前向安裝	ISO/F2X

關於ISOFIX固定支架

ISOFIX固定支架是指為了安裝ISOFIX兒童安全座椅而在汽車座椅的靠背和座席之間安裝的支架(柱)。根據不同的汽車類型，名稱或位置可能會有不同，所以請檢查汽車使用手冊。



<汽車型號符合示例>

廠家	車種名	年份	前向	後向	座席位置
Honda	CR-V	2007-2012, 2013~	○	○	後座席(左右)
Ford	Kuga	2008~	○	○	後座席(左右)
Mazda	CX-5	2011~	○	○	後座席(左右)
Kia	Niro	2016~	○	○	後座席(左右)
Kia	Seltos	2019~	○	○	後座席(左右)
Kia	K3	2013~	○	○	後座席(左右)

- :可以安裝，請按照說明書指示進行安裝。
- ※無論是否裝備安全氣囊，都不建議將兒童安全座椅安裝在副駕駛位；因此未對副駕駛位進行適用車型調查。
- ※以上車種為適合車種的一部分，也有其他汽車車型可安裝此保護裝置。如需要查詢請聯繫本地供應商。

注意

以下的錯誤操作，可能會導致人身傷害或物品損壞。

- 請小心勿讓車門或其他可動部分夾到兒童安全座椅。
- 在陽光直接照射下，本體插扣片等金屬變熱，進而對幼兒會造成灼傷。將幼兒放置於兒童安全座椅前，請先觸摸兒童安全座椅各部分以確保不會對幼兒造成灼傷後再使用。
- 請勿放置未被固定的物件在車內，以免緊急剎車時幼兒被物件所傷。請妥善安放在碰撞事故中容易造成傷害的行李和物品。
- 如果兒童安全座椅的表面材料是用皮革所製成，故此在安裝後留在表面的折痕可能不會消除。
- 如果將兒童座椅當作普通的椅子使用，可能會因翻倒而導致受傷。請勿以本書中未記載的方法使用。
- 請勿拆下本兒童保護裝置的座席布套使用，並請勿替換本產品以外的組件，以免影響受衝擊時兒童保護裝置的安全性。
- 操作或調節時請加倍小心，以免指甲被夾到或捲入插扣裏面。
- 請勿在駕駛時調節兒童安全座椅，而且切勿讓其他同行的幼兒觸摸兒童安全座椅。
- 請勿在有兒童乘坐時安裝、拆卸、搬運。不要手執安全帶來搬運兒童安全座椅。
- 請勿讓本兒童安全座椅暴露於風雨之中。
- 座套布裝有磁石，如幼兒體內裝有心臟起搏器，人工肺，配戴型心電儀或其他體內電子醫療設備，請不要使用本產品。
- 請勿靠近易受磁性損傷的物品。

不能安裝的汽車座席

如出現任何一個事項，請勿使用該座席。

即使是以下所示的汽車座席中沒有提及的，若不能妥當的固定此兒童安全座椅，請勿使用本產品。

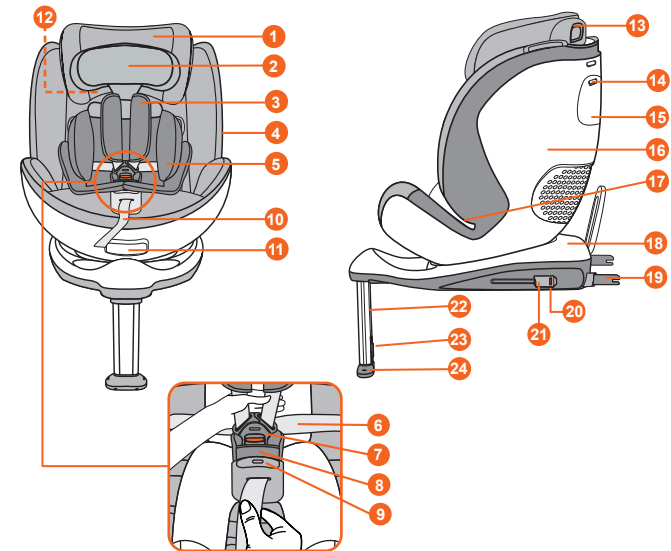
- 沒有裝備ISOFIX固定支架的座席。
- 相對行車方向，橫向或後向的汽車座席。
- 設有安全氣囊的汽車座席；只設有側氣囊的座席則可進行安裝。
- 汽車座席極度凹凸不平，令安裝不穩的座席。
- 切勿安裝於特殊設計的可滑動式汽車座席或座席底部設有收納箱的汽車座席。
- 座席的座面過低或太高，或因為地板的形狀引致支撐腿無法正常安裝的座席。
- 形狀極端的桶型座席(中央部分深陷的座席)。
- 頭靠嚴重突出的汽車座席。因為車輛座席的頭靠，導致安全座椅不能調節靠背角度和頭靠高度。
※假如汽車座席頭靠是可拆卸式，而拆除頭靠後兒童安全座椅可以安裝，則可以在該汽車座席上使用本產品。
- 若車輛座席可移動或車門可移動，則請勿安裝。

- 在兒童用座椅模式下使用時。
- 沒有車輛安全帶的汽車座席。
 - 兩點式安全帶座席。
 - 車輛安全帶非常短的汽車座席。
 - 座席已裝置自動式安全帶即關上門後會自動扣上的自動型安全帶。
 - 安全帶從座席中間伸出的汽車座席。
 - 汽車安全帶伸出點位於兒童用座椅的安全帶導引較前位置的座席。

1.2 各部件名稱

請在使用前確認各部件是否齊全。

- 妥善收據（購買憑證）和本說明書。
- ※本說明書以簡單易明了的目的來描述，故書中圖形與實際產品可能有異。

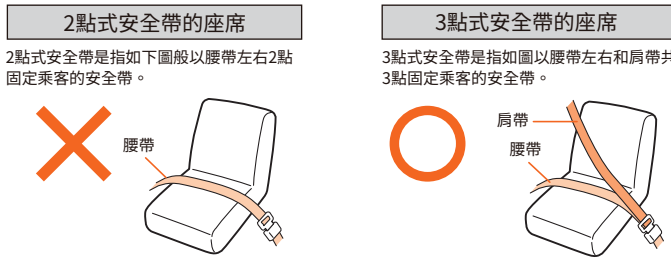


- 1 頭靠
- 2 頭墊
- 3 肩帶套
- 4 插扣片固定位 (插扣片可固定在左右的磁石上)
- 5 身體墊
- 6 兒童安全帶
- 7 插扣座
- 8 中央帶套
- 9 兒童安全帶調節按鈕
- 10 調節帶
- 11 角度調節及旋轉操作拉桿
- 12 肩帶導引
- 13 頭靠調節桿
- 14 收納蓋按鈕
- 15 收納蓋/說明書收納位(內側)
- 16 座部
- 17 腰帶導引
- 18 底座
- 19 ISOFIX連接件
- 20 鎖緊顯示器
- 21 連接件調節按鈕
- 22 支撐腿
- 23 長度調節按鈕
- 24 支撐腿底部

兒童用座椅模式使用時

根據車輛安全帶的種類兒童安全座椅安裝方法不一樣的，不能安裝的情況也有。此兒童保護裝置僅適用於配備 UN R16 或其他基於等效標準批准的三點式安全帶的車輛座席使用。

- 請安裝在3點式安全帶的汽車座席上。
- 切勿安裝在2點式安全帶的汽車座席上。



安全帶的種類和特徵 (區分方法)	安裝要點
ELR 慢慢拉時可自由拉出，用力拉時會自動鎖上。	慢慢拉出安全帶，然後固定妥當。
AELR 安全帶全部拉出後，回捲時會自動鎖上，安全帶此時不再伸長。(全帶全部回收後鎖定裝置會自動解除)。	完全拉出安全帶是危險的。請回捲安全帶和解除兒童安全座椅的固定裝置，然後才安裝座椅。
其他 除上述安全帶以外的其他安全帶。	不可以使用。

※對於汽車安全帶種類有不明之處，請諮詢汽車製造商。

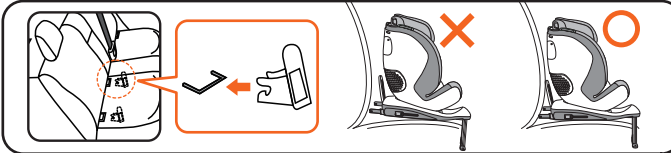
1.4 安裝前事先準備及功能介紹

危險

- 當安裝到汽車上時，請按照使用說明書及本體上的指示固定。請不要用其他方式固定。
- 使用幼童用座椅模式時，不能使用車輛安全帶固定本產品。
- 請勿安裝於設有前側安全氣囊的車輛座席上。發生意外時，彈出的汽車安全氣囊會對幼童造成很大的危險。

- 1)請將汽車停放在平地，以及在兩邊車門能完全打開的地方進行安裝。
為方便進行安裝，請將前座座椅滑向前方，並將椅背往前傾斜。
- 2)將可以取出的汽車頭枕卸下。
※將拆下的汽車頭枕存放於後備廂或貨廂內。
如可能，將汽車座椅靠背稍微傾斜。
- 3)將ISOFIX蓋子安裝至ISOFIX固定支架上。
※根據車輛座席不同，如若安裝ISOFIX蓋子後會使本體背面和車輛靠背之間空隙變大，這時請不要使用ISOFIX蓋子，請直接安裝兒童座椅。

※範例

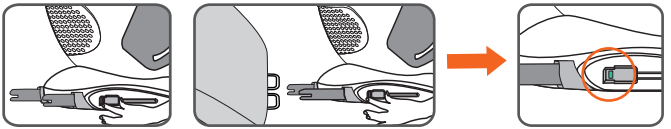


1.5 ISOFIX連接件使用方法

- 1)按住兒童安全座椅兩側的連接件調節按鈕不鬆手，同時沿著水平方向往外拉出至最長。
- 2)對準汽車座椅的ISOFIX接口圓桿，接入ISOFIX直至聽到「咔嚓」聲，此時左右兩側顯示器上顯示「綠色」，才是正確的安裝。
- 3)安裝完畢後，請握著底座前後左右搖動，確保安裝牢固。

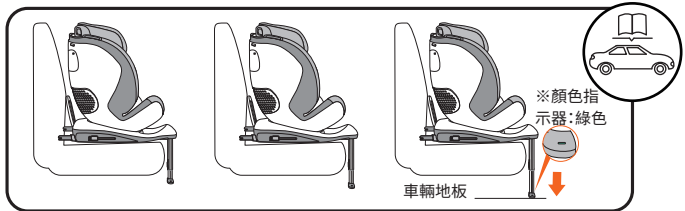
拆卸方法

同時按住兒童安全座椅底座兩側的ISOFIX連接件調節按鈕，聽到解鎖的聲音，然後拉出座椅。



1.6 支撐腿使用方法

- 1)按支撐腿長度調整按鈕伸展支撐腿,直至支撐腿底座牢固地壓在車輛地板上;
- 2)鬆開長度調整按鈕,進一步伸展支撐腿,直到發出“咔嚓”聲;
- 3)檢查顏色指示器是否顯示鎖定狀態(“綠色”可見)。



1.7 背靠角度調節和旋轉座椅

- 1)拉動操作拉桿,按照下圖操作方向實施角度調節和旋轉座椅。
- 2)傾斜或者旋轉座椅座部到合適的位置,釋放操作拉桿,座部將重新自動鎖定。



警告

- 側向90°鎖定功能僅用於乘落上落兒童安全座椅。
- 車輛行駛中嚴禁使用側向90°鎖定,或調整座部角度。

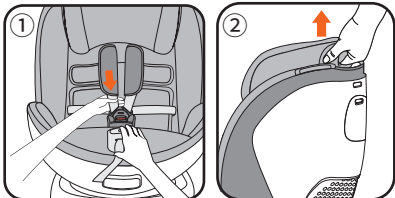
1.8 兒童肩帶位置及調節方法

請參考“1.3 使用條件”的“兒童肩帶的位置”,以幼童用座椅模式使用時

- ①按下兒童安全帶調節按鈕的同時,拿著左右兩邊的兒童安全帶往自己方向拉,釋放安全帶。
- ※拉扯肩帶套不能放鬆兒童安全帶。
- ②拉起頭靠調節桿調整頭靠的高度至合適的位置。

以兒童用座椅模式使用時

參考圖②,拉起頭靠調節桿調整頭靠的高度使肩帶導引移動到合適的位置。

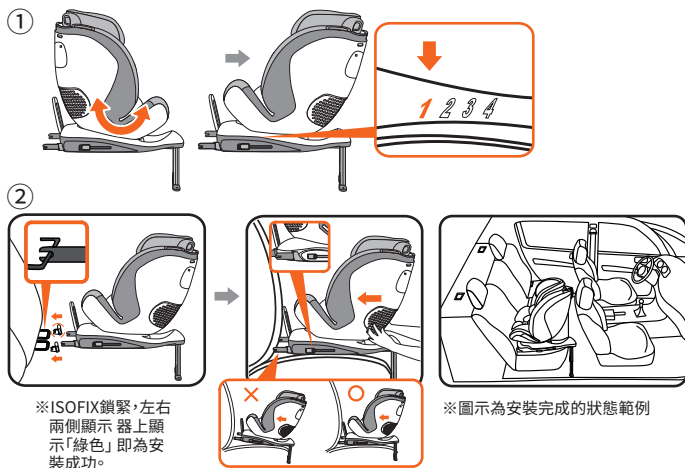


2. 以幼童用座椅模式後向使用時



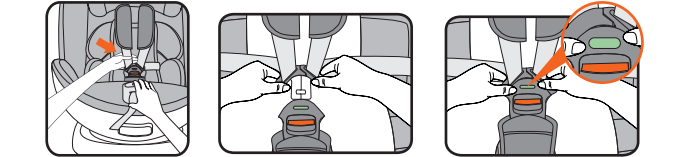
2.1 安裝方法

- ①往前拉動座部下方的操作拉桿,將座部旋轉180°且為最傾斜角度(座部下方箭頭對準底座數字「1」)。
- ②請按照1.5步驟安裝ISOFIX連接件,用力推動兒童安全座椅,直至椅身緊貼汽車座椅靠背。
- ③請按照1.6步驟固定支撐腿。



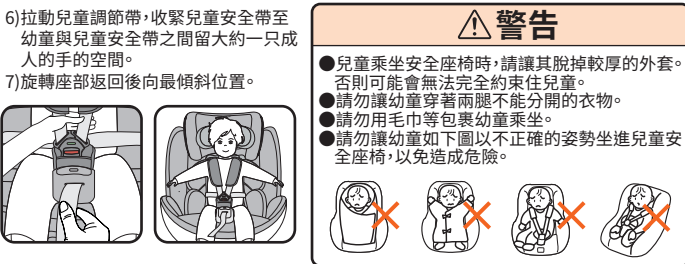
2.2 讓幼童乘坐的方法

- 1)往前拉動座部下方的操作拉桿,旋轉座椅,直至其面向車門並鎖定。
- 2)按下兒童安全帶調節按鈕拉扯,釋放安全帶。
- 3)按下插扣座按鈕,取出插扣片。讓幼童深坐於兒童安全座椅內,將雙臂穿過肩帶。
- 4)拼合左右插扣片,然後一同插進插扣座中,直至聽到「咔嚓」聲,確認插扣顏色顯示器變成「綠色」。
- 5)請盡量將腰帶拉低,使腰帶能固定幼童骨盆的位置。肩帶必須位於兒童肩膀的中央。



警告

- 如果插扣片插入插扣座後顯示器指示沒有變為綠色,請勿使用。
- 請確認兒童安全帶沒有扭曲。請儘量將腰帶拉低,使腰帶能固定幼童骨盆的位置。
- 務必將兒童安全帶調整到合適長度。若根據兒童的身形調整兒童安全帶,發生碰撞時兒童可能會從座椅上飛出去,或者兒童安全帶過鬆可能會纏繞在幼童的脖子上並導致窒息。



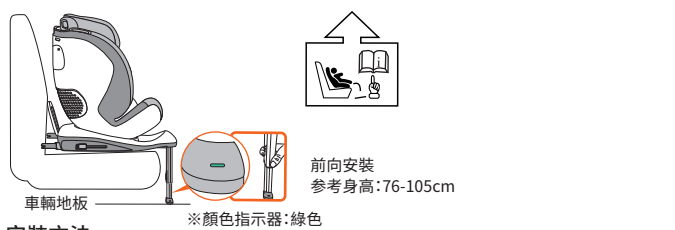
2.3 安裝完後的確認方法

當安裝完成後,請通過以下幾點來確認是否正確安裝。

- ①確保兒童安全座椅緊緊貼著車輛座椅。
- ②ISOFIX連接件鎖定顯示變為「綠色」。
- ③檢查支撐腿的長度是否調節妥當,以確保支撐腿底座牢固地壓在車輛地板上。
- ④請握著底座前後左右搖動,確保安裝牢固。

如有任何問題,請聯繫Combi的客服中心。

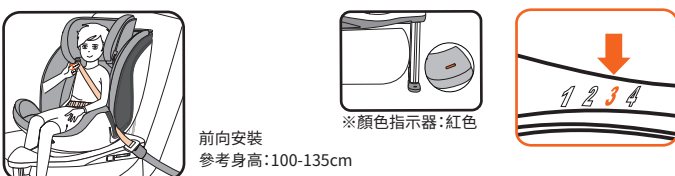
3. 以幼童用座椅模式前向使用時



安裝方法

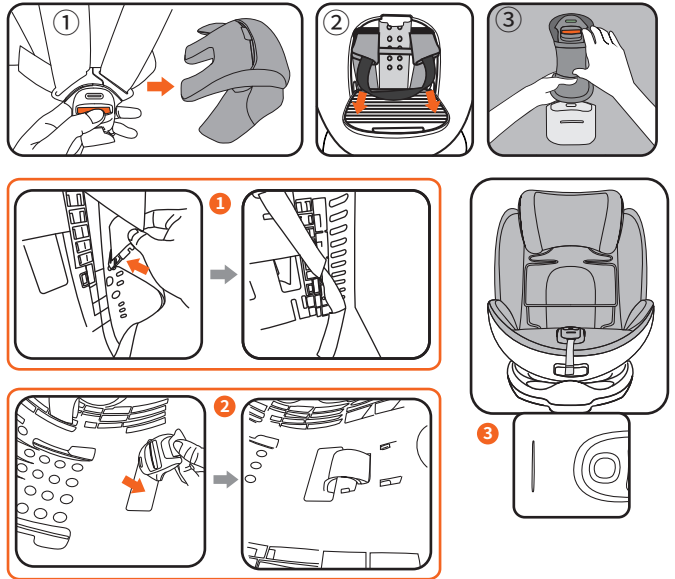
- 1)使座部朝向前方,並根據需要調整至合適的傾斜角度。
- 2)請按照1.5步驟安裝ISOFIX連接件,用力推動兒童安全座椅,直至椅身緊貼汽車座椅靠背。
- 3)請按照1.6步驟固定支撐腿。
- ※讓幼童乘坐的方法及安裝完後的確認方法同2.2/2.3的操作方法。

4. 以兒童用座椅模式使用時

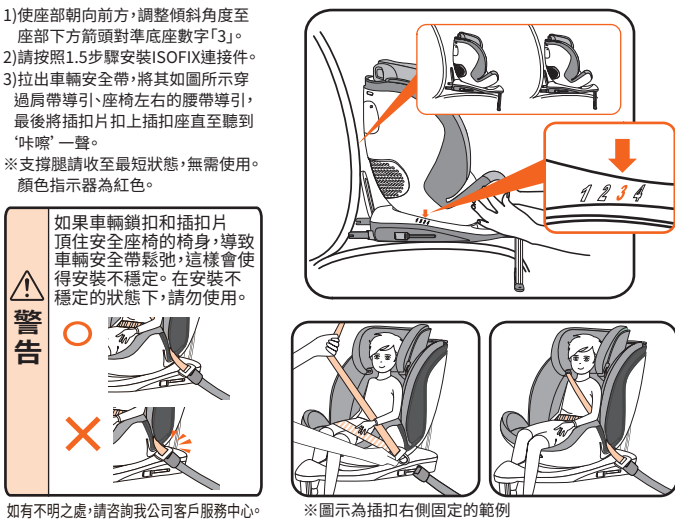


4.1 幼童用座椅模式調整為兒童用座椅模式

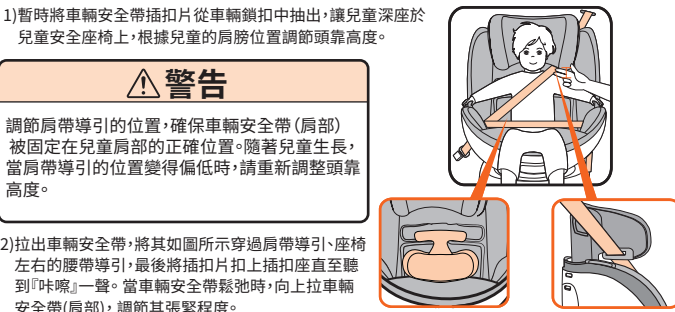
- ①解除插扣座的鎖定,打開兒童安全帶,取下身體墊。
- ②按照5.4步驟拆除肩帶套。
- ③按照5.5步驟拆除插扣座上的中央帶套。
- ④掀開頭靠布套的蓋片和座布套背部蓋片:
- ①將肩帶及插扣片卡到背部塑膠間隙;
- ②如下圖,將插扣座往裡穿過座布套穿,放入座椅內部的卡扣槽處。
- ③隱藏好兒童安全帶後,將座椅布套裝好,將頭墊翻轉置於兒童腰部位置。
- ※已拆除的肩帶套、身體墊等部分請勿置於車內保管,以免在車輛內滾動而影響駕駛。(請務必妥善保管,不要遺失)
- ※還原到幼童用座椅模式的方法,請按照上述步驟相反的順序操作。



4.2 安裝方法



4.3 讓幼童乘坐的方法



警告

- 請確認車輛安全帶沒有出現扭曲和太鬆。
- 請務必使車輛安全帶(腰部)緊緊小孩的骨盆位置。
- 如兒童安全座椅沒有以汽車安全帶緊緊會引致其不安定。請勿讓幼童自行上下安全座椅,以免幼童從座椅上跌落、翻倒,必須在有保護者陪同的情況下才可使用。
- 請勿讓幼童如下方式錯誤乘坐。否則,可能會影響兒童安全座椅的功能,更會引致危險。
- 幼童乘坐時不得將身體向前傾斜。
- 幼童乘坐時不得將身體傾側於左或右方。
- 幼童坐姿要端正,乘坐時不得將腳放於座面。

4.4 安裝完後的確認方法

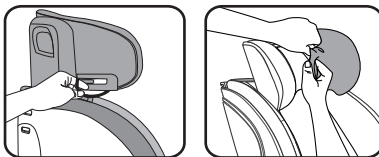
- ①確保兒童安全座椅緊緊貼著車輛座椅。
- ②車輛安全帶通過過肩帶導引,帶子部份沒有緊勒著幼童肩部或於幼童肩膀上過分鬆弛。
- ③車輛安全帶已緊貼小孩身體,沒有扭曲及沒有太鬆。
- ④車輛安全帶已經固定幼童骨盆位置。
- ⑤車輛安全帶插扣片已經緊扣於車輛鎖扣中,沒有脫出。
- ⑥車輛安全帶有通過過座椅左右的腰帶導引。
- ⑦ISOFIX連接件的鎖定顯示器變為「綠色」。
- ⑧確認兒童安全座椅兩側是否和車輛座席平行。(ISOFIX連接件沒有出現單側被過度插入的情況)

5.布套的拆除·安裝方法

※安裝時,請按照和拆除方法相反順序進行。

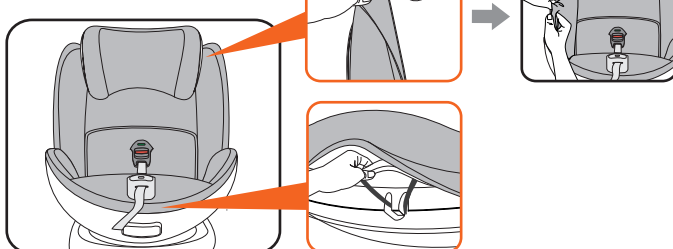
5.1 頭靠布套的拆除方法

- 1)將頭靠布套下方固定在肩帶導引上的皮筋取下;
- 2)沿著頭靠邊緣的凹槽小心取下頭靠布套。



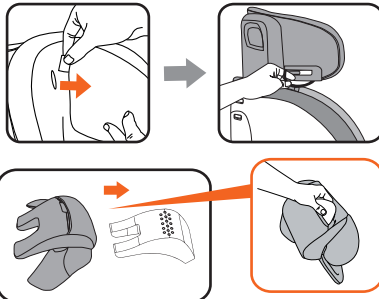
5.2 座布套的拆除方法

- 1)按壓調節裝置按鈕釋放兒童安全帶,提起頭靠;
- 2)鬆開頭靠兩側座布套左右的鈕扣;
- 3)鬆開座席前端座布套的固定皮筋;
- 4)沿著本體的邊緣小心取下座布套。



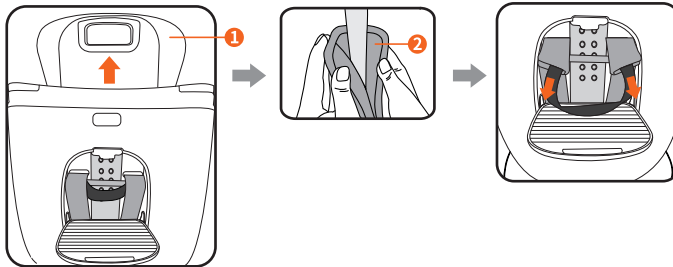
5.3 頭墊和身體墊的拆除方法

- 1)將頭墊下方固定在肩帶導引上的皮筋取下後,將其背部的織帶從頭靠布套的開口中取出即可移除頭墊;
- 2)解除兒童安全帶的鎖定,將身體墊從座位上取下。
- ※清洗頭墊和身體墊時,請取出內部填充物。



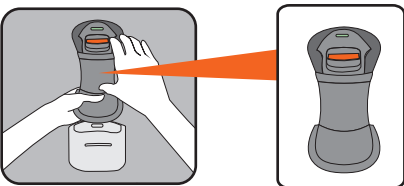
5.4 肩帶套的拆除方法

- 1)打開背部的收納蓋;
- 2)放鬆兒童安全帶,提起頭靠;解開肩帶套上的扣子
- 3)將左右肩帶套從兒童安全座椅的背部抽出。



5.5 中央帶套的拆除方法

解除兒童安全帶的鎖定,一手拉住插扣座帶子,另一只手抽出中央帶套。



6. 清洗及保養方法

座椅套和其他縫製部件的清潔



主體和兒童安全帶的保養

一般情況下請使用擰乾的濕(含水)毛巾擦拭。如果髒污程度較為嚴重,可使用稀釋過的中性洗滌劑清洗,然後再使用擰乾的濕(含水)毛巾擦拭。清洗完畢後,放於陰涼處晾乾。

聚氨酯材料

- 座椅套和其他縫製部件所用的染料可能會印染到這些部件背面的聚氨酯材料上,但不會影響其質量和產品安全。

警告

請勿使用未經稀釋的中性洗滌劑、汽油、苯或其他有機溶劑進行清洗。否則可能會令主體和兒童安全帶受損,對兒童十分危險。

7. 保管及廢棄方法

保存

主體

本產品長期不用時,請將其從汽車座席上取下,並放在通風良好、無陽光直射且兒童無法觸及的地方保存。

廢棄

- 廢棄本兒童安全座椅時,請遵循您所在地區的規定。
- 如果受到撞擊或從高處墜落或即使掉落一次,本兒童安全座椅皆可能會受到結構性損傷。這種情況下,即使未有可見損傷,也請立即停止使用本兒童安全座椅。因事故廢棄本兒童安全座椅時,請先拆下座椅套和其他部件再行廢棄,以免本產品被他人重複利用。

標準使用壽命

本產品的「標準使用壽命」為「新購買後十年」。該標準使用壽命到期後,材料老化可能會導致兒童汽車安全座椅無法正常工作,對兒童非常危險。為了避免不可預見的情況,請勿使用超過標準使用壽命的產品。●務必保存經銷商開具的收據(購買憑證),作為新購買日期的記錄。●即使在標準使用壽命內,由於使用、環境和儲存條件等原因,產品也可能出現故障,不保證此期間的產品質量。●出於產品整體安全原因,不接受超過標準使用壽命的產品維修。●避免重複使用具有未知使用歷史的產品。

Combi Child Car Seat
CrossAge 360 SL

For more information, you can scan this QR code.

User Manual

- For the safety of the child, please read this user manual carefully before use and use the child car seat properly.
- Store this user manual in the storage pocket of the base cover.

This product is an i-Size child car seat/booster seat for specific vehicles, and is certified according to the UN R129/03 standard.

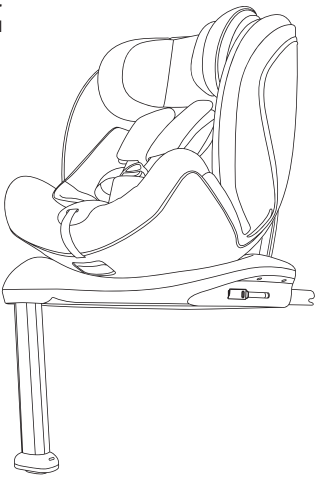
This product can be installed to vehicle seats approved for installation of ISOFIX child car seats. However, this does not mean that this child car seat can be installed to any vehicle seat equipped with ISOFIX anchors (bars). When using the child car seat, always check the vehicle compliance and check the user manual of the vehicle to see if it is compatible with ISOFIX size class.

[Child seat mode]

- Applicable child: Height of 40cm to 105cm and weight of up to 18kg.
- Applicable for both forward installation and rearward installation.

[Junior seat mode]

- Applicable child: Height of 100cm to 135cm and weight of up to 36kg.
- This mode is only suitable for vehicles equipped with 3-point seatbelts approved under UN R16 standard or other equivalent standards.

**⚠ DANGER**

Do not use forward facing before the child's age exceeds 15 months and before the child's height exceeds 76cm.

⚠ CAUTION

To avoid causing stress to the child, avoid continuous long-time usage and give the child a break from the child car seat about once every hour.

1.3 Use conditions

Mode	Child seat mode		Junior seat mode
	Rearward Facing (installation facing rearward relative to driving direction)	Forward facing (installation facing forward relative to driving direction)	
Use status			
Applicable child height	40cm~105cm	76cm~105cm	100cm~135cm
Reclining Angle	Only level 1 is available	Levels 1 to 4 are available	Only level 3 is available
Adjusting the baby shoulder belt position	Adjust the baby shoulder belt so that it is at or slightly below the child's shoulder. 	Adjust the head guard height so that the baby shoulder belt is at or slightly above the child's shoulder. 	Adjust the head guard height so that the shoulder area belt guide is slightly above the child's shoulder.
Using the head cushion and body cushion	When the baby is with a height of 40 cm to 83 cm, be sure to use head cushion and body cushion at the same time. • Be sure to attach the inner cushion correctly and make it fit the child's body completely before use.	Do not use.	Head cushion: To turn the head cushion upside down and use it as a lumbar support. Body cushion: do not use. ※ Please refer to "4.3 Seating the Child".
How to restrain the child	• 5 point baby belt × Vehicle seatbelt	• 5 point baby belt × Vehicle seatbelt	× 5 point baby belt • Vehicle seatbelt
How to fasten the child car seat in the vehicle	• ISOFIX	• ISOFIX	• ISOFIX
	• Support leg × Vehicle seatbelt	• Support leg × Vehicle seatbelt	× Support leg • Vehicle seatbelt

⚠ DANGER

Improper handling will result in imminent risk of death or serious injury.

- Do not seat a child who does not satisfy the use conditions, or install the child car seat to an inapplicable vehicle seat.
- Do not install the child car seat to a vehicle seat equipped with a front airbag. In case of collision, the deploying air bag will strongly impact the child seat, which is dangerous to the child.
...Installation is possible to a vehicle seat with only a side airbag.
- Do not install the child car seat by a method other than described in this user manual and indicated on the main body.
- Do not allow the child to stand, crouch or kneel on the child car seat.
- In the child seat mode, this product cannot be fastened with a vehicle seatbelt.
- When you seat your child in the junior seat mode, make sure that the vehicle seatbelt insert tongue is properly inserted into the vehicle buckle and will not come out.

⚠ Evacuation in case of emergency

- In case of accident or other emergency, an accompanying adult should press the buckle button to release the baby belt (the vehicle seatbelt in the junior seat mode) and evacuate the child from the vehicle immediately.

⚠ WARNING

Improper handling will result in imminent risk of death or serious injury.

- Always keep the baby belt fitting snugly. A loose belt may become wrapped around the child's neck and result in suffocation.
- The child car seat may suffer structural damage in the event of collision or even if it is dropped one time or falls from a high level. In this case, immediately stop using the child car seat even if no damage is visible.
- Do not leave the child alone in the vehicle. On days with strong sunlight, the temperature inside the vehicle may become high and the child may become dehydrated. It may also cause unexpected accidents. A child using the child car seat must be accompanied by an adult.
- In the child mode, if the buckle becomes jammed with dirt, food crumbs or other objects and cannot be fastened securely or is too stiff to release easily, contact Combi's Customer Service Center for repair.
- In the child seat mode, if the baby belt is damaged, contact Combi's Customer Service Center for repair.
- Always fasten the adjustment belt to the seat cover when using the child car seat. A loose belt may become wrapped around the child's neck and result in suffocation.
- Do not modify or improperly repair the child car seat, or operate the child car seat in the way other than that recorded in this instruction manual.
- Keep the child chair fastened with the ISOFIX connector and support leg (in the child seat mode) or the vehicle seatbelt (in the junior seat mode) even when the child is not sitting. Otherwise, the child car seat may roll inside the vehicle, interfering with driving in case of sudden braking.
- Do not install the child car seat to a vehicle seat where it may obstruct the exit of other passengers from the vehicle in an emergency.
- In the child seat mode, the child may press the buckle button. Make sure that the insert tongue is not out of the buckle. If it comes out, the baby belt will not work properly and may become wrapped around the child's neck.
- In the Junior seat mode, do not install the child car seat in a seat with the vehicle seatbelt damaged in any way.
- In the Junior seat mode, when using a vehicle seatbelt with a child seat fastening function, do not enable fastening. The belt will be too tight around the child and their chest will be compressed.
- Please replace the child safety seat after severe accident.

1.Before Use

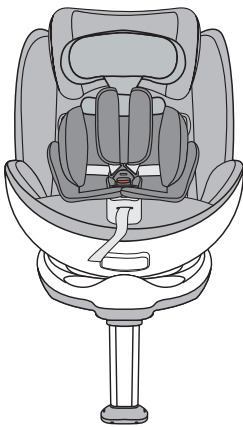
<About using second-hand child car seats>

- Never use a child car seat with an unclear usage history.
- Never use a child car seat if it has cracks, large scratches or loose fasteners.

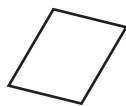
The child car seat is designed to reduce injury to child in case of traffic accident, etc. However, there is no guarantee that the child car seat can completely protect the child from injury. A child using the child car seat must be accompanied by an adult.

1.1 Package contents

- Main body



- User manual (this manual)



- ISOFIX insertion guide



Combi Corporation

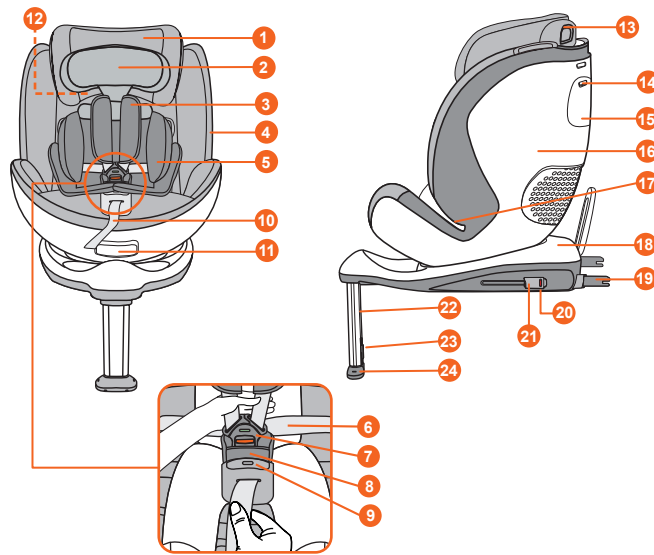
191936050

1.2 Name of Parts

Check that all parts are present before use.

- Store the receipt (proof of purchase) together with this manual.

※ This manual uses simplified illustrations to help users easily understand operation and handling, and there may be slight differences from the actual product.



- | | | |
|---|--|---|
| ① Head guard | ⑧ Crotch belt cover | ⑮ Folding cap/User manual storage pocket (Inside) |
| ② Head cushion | ⑨ Baby belt adjustment button | ⑯ Seat base |
| ③ Shoulder belt cover | ⑩ Adjustment belt | ⑰ Waist belt guide |
| ④ Insert Tongue Fixing Position (insert tongue pieces can be fixed on the left and right magnets) | ⑪ Revolving release & reclining adjustment lever | ⑱ Base |
| ⑤ Body cushion | ⑫ Shoulder belt guide | ⑲ ISOFIX Connector |
| ⑥ Baby belt | ⑬ Head guard adjustment lever | ⑳ Indicator |
| ⑦ Buckle | ⑭ Folding cap button | ㉑ Connector adjustment lever |
| | | ㉒ Supporting leg |
| | | ㉓ Length adjustment button |
| | | ㉔ Supporting leg base |

When using the junior seat mode

Depending on the type of seatbelt, the child car seat may not be able to be installed or may be installed differently.

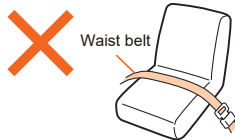
This mode is only suitable for vehicles equipped with a 3-point seatbelt approved under UN R16 standard or other equivalent standards.

⚠ DANGER

- Be sure to install the child car seat on a vehicle seat with a 3-point seatbelt.
- Never install the child car seat on a vehicle seat with a 2-point seatbelt. Installing the child car seat on such a vehicle seat may prevent the child car seat from functioning properly, which is dangerous to the child.

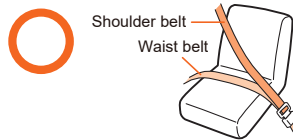
2-point seatbelt

As shown in the figure, a seatbelt that does not have a shoulder belt and supports the body at two points on the right and left of the waist belt.



3-point seatbelt

As shown in the figure, a seatbelt that supports the body at three points: the right and left sides of the waist belt and the shoulder belt.



Types and characteristics of seatbelts (how to distinguish them)	Precautions for installation
ELR	Pull the seatbelt slowly to move it in and out freely, and pull it vigorously to lock it.
AELR	If you pull out all the seatbelt and then let it rewind, the child car seat securing function will work and you will not be able to stretch the seatbelt anymore. (It will be released when the entire anymore seatbelt is rewound.)
Other	Seatbelts that do not apply to the above.

※ If you are unsure of the type of seat belt, please contact your automobile manufacturer.

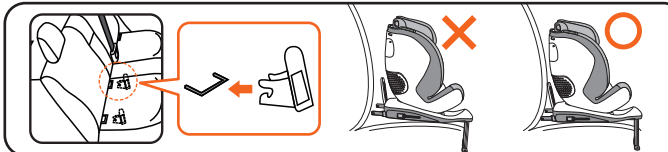
1.4 Preparation of Installation

⚠ DANGER

- Do not install the child car seat by a method other than described in this user manual and indicated on the main body.
- This product cannot be fastened using the vehicle seatbelt in the child seat mode.
- Do not install the child car seat to a vehicle seat equipped with a front air bag. In case of collision, the deploying airbag will strongly impact the child car seat, which is dangerous to the child.

- Park the vehicle in a flat location where doors can be fully opened. Slide the front seat forward and tilt the backrest to the front to create space for easier installation to the vehicle.
- Remove the vehicle headrest if possible.
※ Store the removed vehicle headrest in the trunk or cargo compartment. Recline the vehicle seat backrest slightly if possible.
- Fit the ISOFIX insertion guides onto the ISOFIX anchors.
※ However, note that attaching the ISOFIX connectors may increase the gap between the back of the base and seat backrest for some vehicle seats. In these cases, install the child car seat without using the ISOFIX connectors.

※ Example

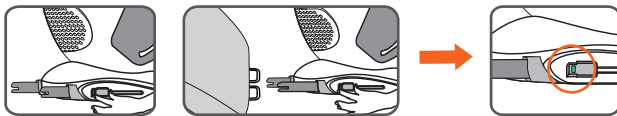


1.5 Installing the ISOFIX connector

- Press down and hold the ISOFIX adjuster button on both sides of the child safety seat and pull it out horizontally to the longest at the same time.
- Fit the ISOFIX connectors onto the right and left ISOFIX anchors of the vehicle seat and push the ISOFIX connectors until they lock with a 'click' sound, at this time, and the 2 sides ISOFIX indicator turns "Green" to complete the installation successfully.
- Hold the base and try to rock the child car seat in all directions to make sure it is installed securely after the installation.

Uninstalling method

Simultaneously press down and hold the ISOFIX button on both sides of the child safety seat base until hear the sound of unlocking before pull out the seat.



Applicable Vehicle Seats

This child car seat can be installed to vehicle seats approved for installation of ISOFIX child car seats. However, this does not mean that the child car seat can be installed to any vehicle equipped with ISOFIX anchors (bars).

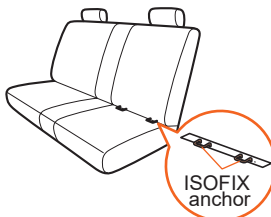
When using the child car seat, always check the vehicle compatibility chart and check the user manual of the vehicle to make sure the ISOFIX size classes noted below are supported.

ISOFIX size classes of this product

Use condition	Anchors
Rearward Facing	ISO/R2
Forward facing	ISO/F2X

ISOFIX anchoring system

ISOFIX anchors are metal fixtures (bars) provided between the vehicle backrest and seat in order to install an ISOFIX child car seat. The name and position may differ according to the vehicle, so always check the user manual of the vehicle.



<The case for the match of the car type>

Maker	Model Name	Year	Forward	Rearward	Seat position
Honda	CR-V	2007-2012, 2013~	○	○	Back seat (left and right)
Ford	Kuga	2008~	○	○	Back seat (left and right)
Mazda	CX-5	2011~	○	○	Back seat (left and right)
Kia	Niro	2016~	○	○	Back seat (left and right)
Kia	Seltos	2019~	○	○	Back seat (left and right)
Kia	K3	2013~	○	○	Back seat (left and right)

○: It is allowed to install. Please install according to the "instruction manual".

※ We do not recommend mounting car seats on the front passenger seat regardless of if there are airbags or not; thus we have not conducted a vehicle model compatibility survey on the front passenger seat.

※ These are some examples of the car models that are suitable to install. There are also other car models that can install this equipment. Please contact our local distributor for any enquires.

⚠ CAUTION

Improper handling may result in injury or damage to property.

- Make sure the child car seat does not get jammed between the vehicle doors or other movable parts.
- Exposing the child car seat to direct sunlight may cause the main body, insert tongue and other parts to become hot and burn the child. Touch each part and check that it is not too hot before seating the child.
- If you have any unfastened objects in the vehicle, be careful as they may hit the child in the event of any sudden braking or a collision. Please properly place the luggage and items that are liable to be damaged in collision.
- Depending on the shape and surface material (leather, etc.) of the vehicle seat, scratches or marks may remain on the vehicle seat after installation.
- If you use the child car seat as a normal chair, the child sitting may fall off and be injured. Only use the child car seat as described in this user manual.
- Do not use the child car seat with the seat cover and other sewn parts or the urethane and other cushioning removed. Also do not replace these parts with parts not specifically authorized by Combi for this product. (This may negatively affect safety performance in the event of collision.)
- Users should be especially careful when fastening or adjusting the child car seat to prevent fingernails or artificial nails from becoming jammed in gaps or moving parts.
- Do not operate or adjust the child car seat while driving. Also, make sure that other children on board do not touch the child car seat.
- Do not install, remove or carry the child car seat with a child on it. Do not carry the child car seat with the baby belt.
- Do not expose the child car seat to wind or rain.
- Product seat cushion contains magnetic, do not use this product if children have a pacemaker, or artificial lung, or wear an ECG, or any other internal medical device.
- Do not get close to articles which are easily damaged by magnet.

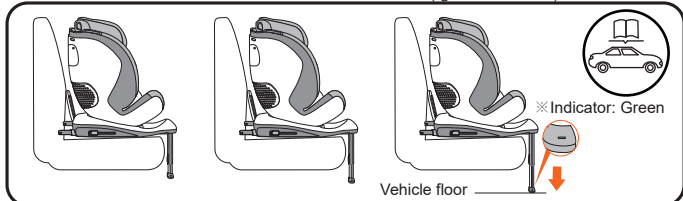
Do not install the child car seat to a vehicle seat that meets any of the following conditions.

Do not use the child car seat if it cannot be secured firmly, even if none of the conditions noted below apply.

- Vehicle seat that is not equipped with ISOFIX anchors (bars).
- Vehicle seat facing backwards or sideways relative to driving direction.
- Vehicle seat equipped with a front airbag. ...Installation is possible to a vehicle seat with only a side airbag.
- Vehicle seat with a seat an extremely uneven surface that prevents stable installation.
- Vehicle seat where the supporting leg base rests on a vehicle seat slide rail or an underfloor storage space, etc.
- Vehicle seat with a seat surface too high or too low from the floor or with a floor shape that prevents the supporting leg from being installed properly.
- Extreme shaped bucket seat ...Vehicle seat that goes deep in the center of the seat base
- Vehicle seat with extremely protruding vehicle headrest ...Due to the shape of the vehicle headrest, it is not possible to recline the back of the seat or adjust the headrest of the child car seat.
※ If the headrest of the vehicle seat can be removed, which enables reclining or adjusting the headrest, the child car seat can be attached to such a seat.
- Do not install it if the car seats or doors are movable.
Only when used in the junior seat mode
- Vehicle seat that is not equipped with a vehicle seatbelt
- Vehicle seat with a 2-point seatbelt
- Vehicle seat with an extremely short vehicle seatbelt
- Vehicle seat with a passive seatbelt
※ Passive seatbelt ...A device that automatically attaches the vehicle seatbelt when you sit in a vehicle seat and close the door. (Automatic seat belt)
- Vehicle seat with a vehicle seatbelt coming from the middle of the seat ...Vehicle seat where the seatbelt comes from a position before the waist belt guide of the child car seat.

1.6 Using support leg

- 1) While pressing the length adjustment button of the supporting leg, extend the supporting leg until the supporting leg base presses firmly against the vehicle floor.
- 2) Release the length adjustment button and further extend the supporting leg until it locks with a "Click" sound.
- 3) Check that the color indicator shows the locked condition ("green" is shown).

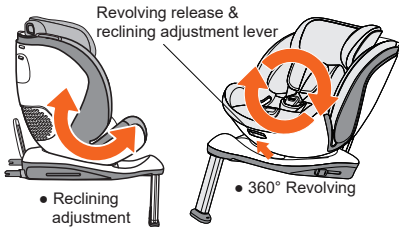


1.7 Using the reclining function & rotating the seat

- 1) Pull the lever to adjust the angle and rotate the seat in the direction as shown in the figure below.
- 2) Recline or rotate the seat base to an appropriate position, and release the lever. The seat base will be automatically locked again.

CAUTION

- Be sure to refer to the section "Conditions of Use" to choose an appropriate back angle and a correct installation direction according to the height of the child.
- After the lever is pulled to unlock the seat, angle adjustment and seat rotation can be carried out at the same time.



WARNING

- The lateral 90-degree locking function is only used when you seat or pick up the child.
- Do not use the lateral 90-degree locking function or adjust the base angle during driving.

1.8 Adjusting the baby shoulder belt position

Please refer to the "Position of Child Shoulder Belt "in" 1.3 Conditions of Use".

When using as the child seat mode

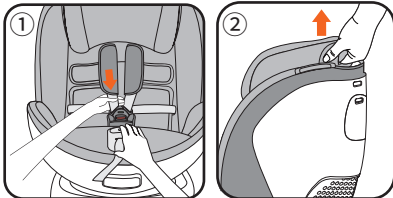
- ① While pressing the baby belt adjustment button, pull both the left and right baby belts forward to loosen the baby belts.

※ Do not pull on the shoulder belt covers, as this will not loosen the baby belts.

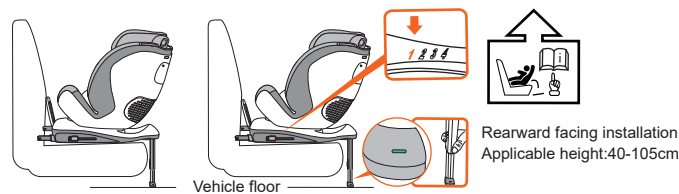
- ② Pull up the head guard adjustment lever, adjust the height of the head guard to a proper position.

When using as the junior seat mode

Please refer to Fig ②, pull up the head guard adjustment lever, adjust the height of the head guard to a proper position.

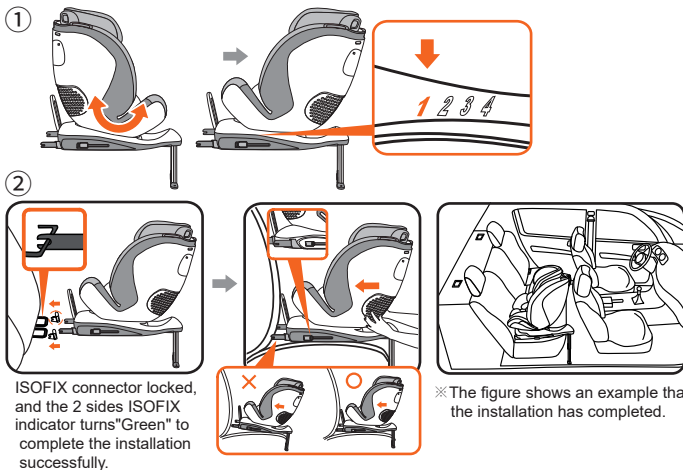


2. Using Child Seat Mode Rearward facing



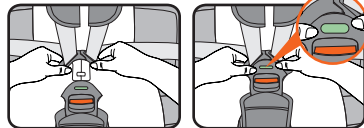
2.1 Installing to the Vehicle

- ① Pull the lever under the base forward and rotate the base 180° to the maximum angle (when the arrow below the seat is aligned with the number "1" on the base).
- ② Install the ISOFIX connector by following the steps in Section 1.5, push the child car seat firmly the seat is snug against the back of the car seat.
- ③ Secure the support legs by follow the steps in Section 1.6.



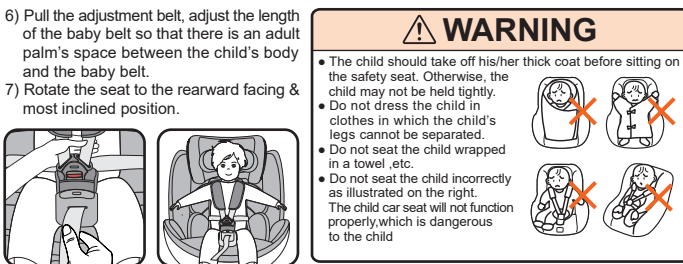
2.2 Seating the Child

- 1) While pushing up the revolving release lever, rotate the seat so that the front faces the vehicle door side to make it easier to seat the child.
- 2) Press the baby belt adjustment button to loosen the baby belts.
- ※ Do not pull on the shoulder belt covers, as this will not loosen the baby belts.
- 3) Press the buckle button and remove the insert tongue from the buckle. Seat the child deeply into the child car seat and pass the child's arms through the left and right baby belts.
- 4) Match the left and right insert tongues and insert them into the buckle until they lock with a "Click" sound. Make sure that the buckle color indicator changes to "green".
- 5) Pull down the baby waist belt to firmly hold the pelvis position. The baby shoulder belt should always be located in the center of the child's shoulder.



WARNING

- Do not use the child car seat if the indicator does not change to green when the insert tongue is inserted into the buckle.
- Check that the baby belt is not twisted or loose. Always pull down the baby waist belt to firmly hold the pelvis position.
- Always adjust the baby belt to the proper length. If the baby belt is not fit to the child's body, the child may tumble out of the child car seat in the event of collision or a loose baby belt may wrap around the child's neck and result in suffocation.



2.3 Checklist after Installation

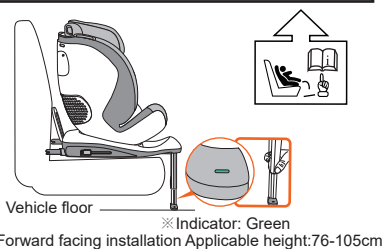
After installation, check the following to make sure that the child car seat is installed properly.

- ① Please ensure that the child car seat is tightly fastened against.
 - ② Check that the color of ISOFIX connector indicators show the locked condition ("green" is shown).
 - ③ Check that the length of the supporting leg is adjusted so that the supporting leg base presses firmly against the vehicle floor.
 - ④ Hold the base and try to rock the child car seat in all directions to make sure it is installed securely.
- If you have any questions, please contact Combi's Customer Service Center.

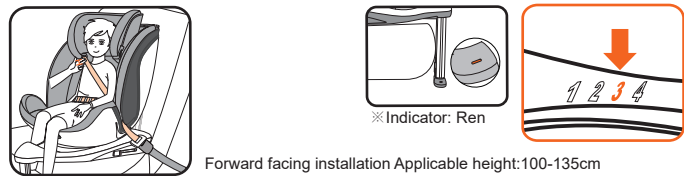
3.Using Child Seat Mode Forward facing

Method of erection

- 1) Keep the base facing forward and recline it to an appropriate angle.
 - 2) Install the ISOFIX connector by following the steps in Section 1.5, push the child car seat firmly the seat is snug against the back of the car seat.
 - 3) Secure the support legs by follow the steps in Section 1.6.
- ※ The method for seating the child and the confirmation method after installation are the same as those in Section 2.2/2.3.

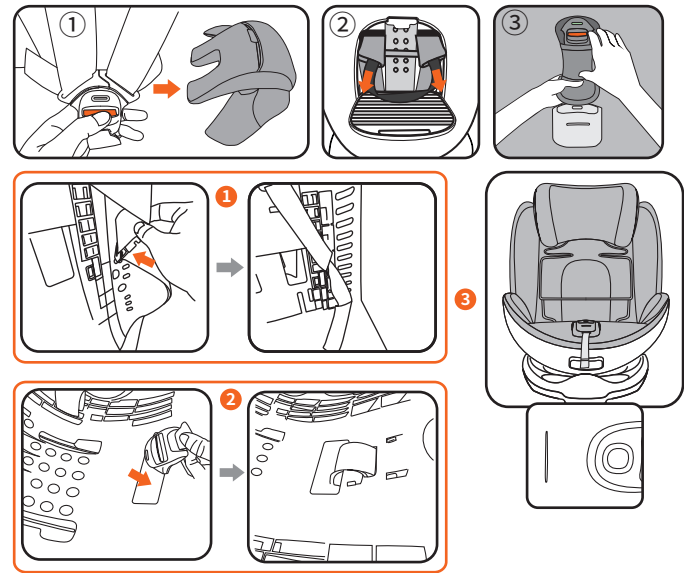


4.Using Junior Seat Mode



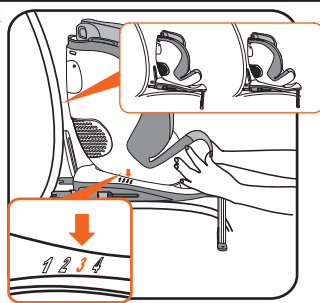
4.1 Child Seat Mode Changing to Junior Seat Mode

- ① Undo the buckle, unlock the child safety belt, and remove the body cushion.
 - ② Remove the shoulder belt cover by follow the steps in Section 5.4.
 - ③ Remove the crotch belt cover from the buckle by following the steps in Section 5.5.
 - ④ Lift the cover of the headrest fabric sleeve and the back cover of the seat fabric sleeve:
- ① Clip the shoulder belt and the buckle tongue into the plastic gap on the back.
 - ② As shown below, insert the buckle seat inward through the cloth cover and place it in the buckle slot inside the seat.
 - ③ After child safety belt hidden, assemble the seat cloth and turn the headrest upside down and use it as a lumbar support.
- ※ Do not leave the removed shoulder belt cover and body cushion inside the vehicle. They may move inside the vehicle and interfere with driving. (Keep them in a safe place and do not lose them.)
- ※ Please follow the reverse order of the above steps to restore to the child seat mode.
- ※ To restore to the child seat mode, follow the steps above in reverse order.



4.2 Installing to the Vehicle

- 1) Keep the seat facing forward and adjust the back angle until the arrow below the seat is aligned with the number "3" on the base.
 - 2) Install the ISOFIX connector by following the steps in Section 1.5.
 - 3) Pull out the car seatbelt, then run it through the shoulder belt guide and the left and right lap belt guides of the seat as shown in the figure, and finally push the buckle tongue into the buckle until you hear a "click" sound.
- ※ Please retract the support legs to the shortest state, which are not to be used. The color indicator is red.

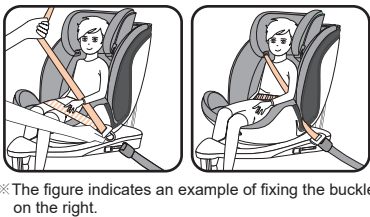


WARNING

If the vehicle buckle or insert tongue hits the child car seat body and the vehicle seatbelt becomes loose, the installation becomes unstable. Do not use the child car seat unless it is stable.

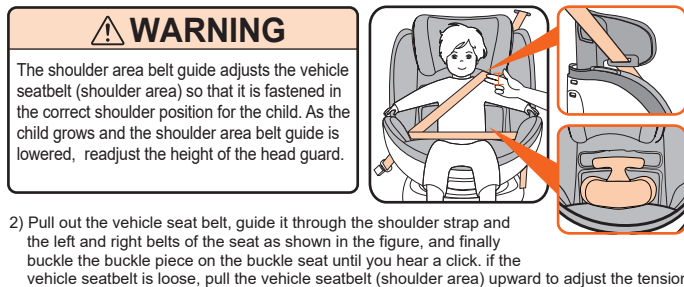


If you have any questions, please contact Combi's Customer Service Center.



4.3 Seating the Child

- 1) Remove the insert tongue from the vehicle buckle once, have your child sit deep in the child car seat and adjust the height of the head guard to suit your child.



WARNING

- Check that the vehicle seatbelt is not twisted or loose.
- Always pull down the vehicle seatbelt (waist area) to firmly hold the pelvis position.
- This product becomes unstable if it is not fastened with the vehicle seatbelt. If the child gets on and off by them self without the assistance of an adult, they may slide off the vehicle seat or fall down. Be sure to have an adult take them down.
- Make sure that the child's arm comes over the vehicle seatbelt.
- Sitting the child as below may cause the child car seat to function improperly, which is dangerous to the child.
- The child squeezes or leans forward.
- The child is sitting with their body leaning to the left or right.
- Children should sit upright, don't put the feet on the child car seat when the child is sitting.

4.4 Checklist after Installation

After the child is seated and the vehicle seatbelt is fastened, check the following to make sure that the child car seat is installed properly.

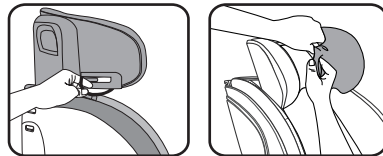
- ① Please ensure that the child car seat is tightly fastened against.
- ② Check that the vehicle seatbelt has passed through the shoulder area belt guide, does not compress the child's neck and is not off the shoulder of the child.
- ③ Check that the vehicle seatbelt fits the child and is not twisted or loose.
- ④ Check that the vehicle seatbelt is around the child's pelvis position.
- ⑤ Check that the insert tongue of the vehicle seatbelt is securely inserted into the vehicle buckle and cannot be disconnected.
- ⑥ Check that the vehicle seatbelt passes through the right and left waist belt guides.
- ⑦ Check that the connector release button indicator shows "green".
- ⑧ Check that the right and left sides of the child car seat main body and the vehicle seat are parallel. (The ISOFIX connector is not pushed further on only one side.)

5.Attaching and Removing the Covers

※ Installation is the reverse procedure from removal.

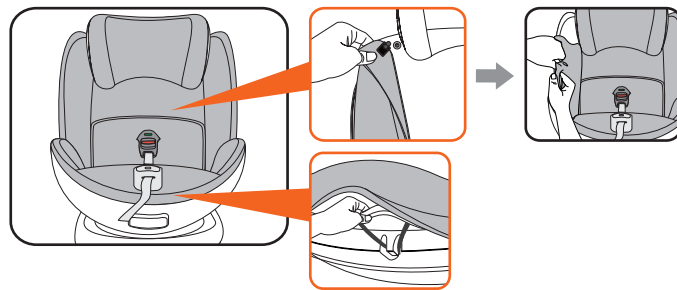
5.1 Removing the headrest fabric sleeve

- 1) Remove the rubber band fixed on the shoulder belt guide under the headrest fabric sleeve.
- 2) Carefully remove the headrest fabric sleeve along the groove on the edge of the headrest.



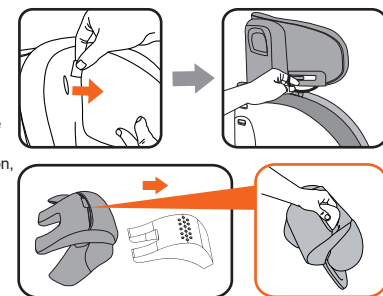
5.2 Removing the seat fabric sleeve

- 1) Press the adjuster button to release the child safety belt and lift the headrest.
- 2) Release the left and right buttons of the seat fabric sleeve on both sides of the headrest.
- 3) Release the rubber band for fixing the seat fabric sleeve in front of the car seat.
- 4) Carefully remove the seat fabric sleeve along the edge of the main body.



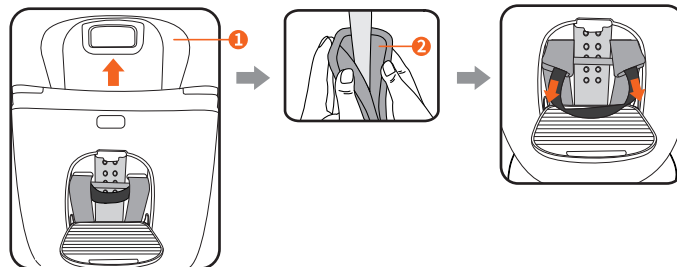
5.3 Removing the headrest and body cushion

- 1) Remove the rubber band fixed on the shoulder belt guide below the headrest and then remove the fabric belt on the back of the headrest from the opening of the headrest fabric sleeve to remove the headrest.
 - 2) Unlock the child safety belt and remove the body cushion from the car seat.
- ※ To clean the headrest and body cushion, please remove the internal fillers.



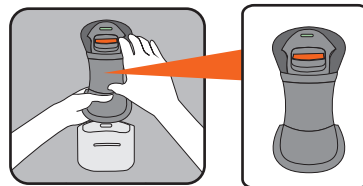
5.4 Removing the shoulder belt cover

- 1) Open the storage cover on the back.
- 2) Loosen the child safety belt, lift the headrest, and unbutton the shoulder belt cover.
- 3) Pull the left and right shoulder belt covers out of the back of the Child Car Seat.



5.5 Removing the crotch belt cover

- Unlock the child safety belt, pull the buckle strap with one hand, and pull out the crotch belt cover with the other hand.



6.Maintenance Method

Washing the seat cover and other sewn parts.



Maintenance of the main body and baby belt

Normally wipe clean with a well-wrung wet (water) cloth. When extremely dirty, remove the dirt using a solution or neutral detergent diluted with water, then wipe with a wet (water) cloth and dry in shade.

Urethane materials

- The dyestuff used in the seat cover and other sewn parts may transfer to the urethane materials on the back of these parts. However, this is not a problem for quality or safety.

WARNING

Do not use undiluted neutral detergent, gasoline, benzene or other organic solvents when cleaning. These may damage the main body and baby belt, which is dangerous to the child.

7.Storage and Disposal

Storage

Main body

When the child car seat will not be used for a long period of time, uninstall it and store in a well-ventilated place out of direct sunlight and away from children.

Disposal

- When disposing of the child seat, follow the standards of your municipality or region.
- The child car seat may suffer structural damage in the event of collision or even if it is dropped one time or falls from a high level. In this case, immediately stop using the child car seat even if no damage is visible. When disposing of the child car seat after an accident, remove the seat cover and other parts before disposal to prevent the child car seat from being reused.

Standard service life

The Standard Service Life of this product is ten years after new purchase. Once this standard service life has passed, material aging may prevent the child car seat from functioning properly, which is dangerous to the child. To avoid unforeseen circumstances, refrain from use past the standard service life.

- Always make sure to store the receipt (proof of purchase) issued by the dealer as a record of the new purchase date.
- Even within the standard service life, the product may malfunction due to use, environment and storage conditions, and quality is not guaranteed during this period. Repairs past the warranty period of 'one year from the date of purchase' noted on the warranty card will entail a charge.
- For reasons of overall product safety, repair of products past the standard service life cannot be accepted.
- Refrain from reusing products with an unknown usage history.